

PRESSURE EQUALIZED RAINSCREEN SYSTEM | DESIGNED IN AMERICA | MADE IN AMERICA | SOLID METAL

TECHNICAL INFORMATION

- MATERIAL THICKNESS: .080" ALUMINUM
- MATERIAL WEIGHT: 2 POUNDS PER SQUARE FOOT
- SYSTEM DEPTH: 1-1/4" NOMINAL STANDARD, UP TO 6"
- PANEL JOINTS: 5/8" NOMINAL STANDARD (1/8" - 1" AVAILABLE)
- MATERIAL FINISH: 70% PVDF, OR 100% FEVE, UNLIMITED COLOR PALETTE
- WARRANTY: 20 YEARS STANDARD FOR PAINT | 2 YEARS STANDARD MFG. (EXOTICS & BRIGHT COLORS COULD BE A 5 OR 10-YEAR, DETERMINED BY PAINT SUPPLIER)
- SUBSTRATE: MIN. 16ga HORIZONTAL GIRTS REQUIRED AT TOP, BOTTOM AND ALL HORIZONTAL JOINTS (SYSTEM CAN BE INSTALLED DIRECTLY TO 5/8" OR THICKER PLYWOOD)
 USB SHEATHING AND DENS GLASS ARE NOT SUITABLE

FEATURES AND BENEFITS

- FORMED FROM ONE PIECE OF METAL
- PRECISION FABRICATED MODULAR DESIGN
- NO SILICONE OR SEALANTS
- ZERO PLASTICS
- 100% RECYCLABLE
- NON-COMBUSTIBLE
- CUSTOM PERFORATED OR EMBOSSING
- QUICK INSTALLATION & EASILY FIELD CUT



INDEX	
SHEET	DESCRIPTION
COVER	SYSTEM INFORMATION
G101	GENERAL INFORMATION
KP01	KEY PLAN
E01 - E05	ELEVATIONS & SOFFIT
D01 - D22	DETAILS

INFO@ZEEFFPANELS.COM | WWW.ZEEFFPANELS.COM

FULLY TESTED: AAMA 508 | ASTM E330 | ASTM E283 | ASTM E1233 | ASTM E331 | AAMA 505.1

COVER

ORIGIN SERIES DESIGN GUIDE

CUT-TO-FIT INSTALLATION



GENERAL INFORMATION

- THE ORIGIN SERIES PANEL BY ZEEFF PANEL SYSTEMS IS A PRESSURE EQUALIZED RAIN SCREEN SYSTEM. A APPROPRIATE SUBSTRATE AND WEATHER BARRIER IS REQUIRED BEHIND ALL PANELS. INSTALL WEATHER BARRIER PER MANUFACTURERS SPECIFICATIONS.
- BEFORE ANY FABRICATION OF MATERIAL CAN BEGIN, ZEEFF PANEL SYSTEMS WILL REQUIRE OUR CONTRACTUALLY OBLIGATED CUSTOMER TO GUARANTEE PANEL SIZES AS DRAWN PER SHOP DRAWINGS, OR APPROVE IMPLEMENTED FIELD MEASUREMENTS ON SHOP DRAWINGS. A PHYSICALLY SIGNED COLOR CHIP WILL BE REQUIRED AS WELL AS A “CONTROL SAMPLE” OF THE FINISH TO PROVIDE.
- THE ORIGIN SERIES PANEL BY ZEEFF PANEL SYSTEMS IS NOT A STRUCTURAL PANEL. ALL LIGHTS, SIGNAGE, DOWN SPOUTS, ETC. MUST BE ATTACHED DIRECTLY TO THE BUILDING STRUCTURE, NOT THE PANEL BY ZEEFF PANEL SYSTEMS.
- OIL CANNING / FINGER PRINTING ARE NOT AND WILL NOT BE A CAUSE FOR MATERIAL REJECTION.
- A DIELECTRIC SEPARATE MATERIAL IS REQD. BETWEEN ANY DISSIMILAR METALS.
- ZEEFF PANEL SYSTEMS WILL NOT UNDER ANY CIRCUMSTANCES ACCEPT ERRORS RESULTING FROM THE USE OF THESE DRAWINGS BY OTHER TRADES
- O.S.B. (ORIENTED STRAND BOARD) AND ANY TYPE OF GYPSUM BOARD MATERIAL (I.E. DENSGLASS) ARE NOT AN ACCEPTABLE SUBSTRATE FOR DIRECT FASTENING. 5/8” EXTERIOR GRADE PLYWOOD IS THE MINIMUM PANEL ATTACHMENT. ZEEFF PANEL SYSTEMS IS NOT RESPONSIBLE FOR ANY FAILURES DUE TO INCORRECT INSTALLATION, OR NON-APPROVED ATTACHMENT SUBSTRATES.
- THESE DRAWINGS AND THE INFORMATION CONTAINED WITHIN ARE THE SOLE AND EXCLUSIVE PROPERTY OF ZEEFF PANEL SYSTEMS AND ARE NOT TO BE USED FOR ANY OTHER PURPOSE WITHOUT PRIOR AUTHORIZATION.

FASTENER NOTE:

- A SUITABLE FASTENER MUST BE INSTALLED INTO EVERY PRE-PUNCHED FASTENER HOLE ON THE PANEL, OR AT A MAXIMUM OF 8" O.C. WHERE THE PANEL ATTACHMENT FLANGE HAS BEEN REMOVED.
- SUITABLE FASTENERS MUST BE SELECTED FOR ALL PROJECT CONDITIONS. FASTENERS AS SHOWN ON ZEEFF PANEL SYSTEM SHOP DRAWINGS ARE FOR REFERENCE PURPOSES ONLY. FASTENERS ARE NOT PROVIDED BY ZEEFF PANEL SYSTEMS AND ARE THE RESPONSIBILITY OF THE INSTALLING CONTRACTOR (ZEEFF PANEL SYSTEMS CUSTOMER)

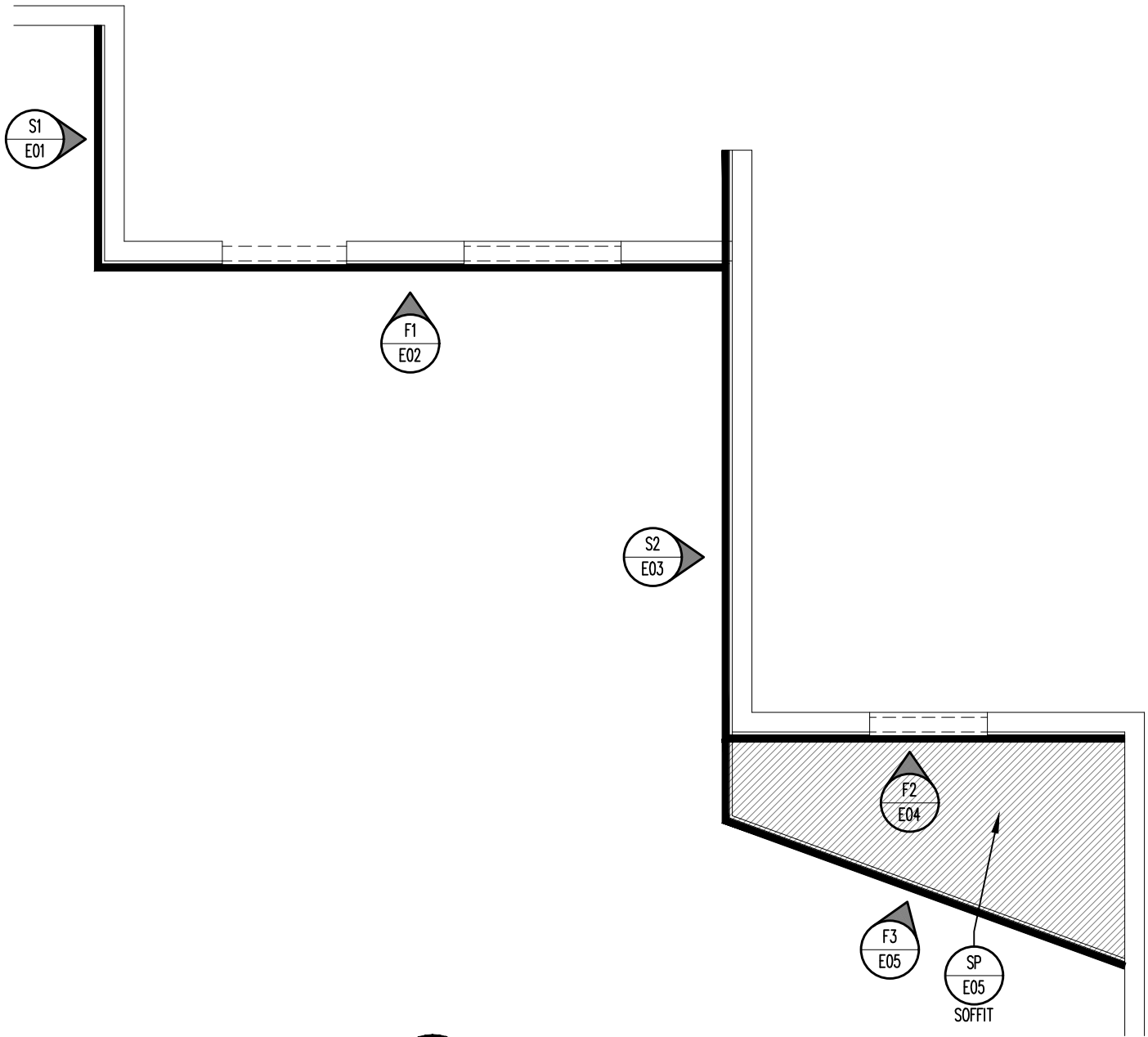
INFO@ZEEFFPANELS.COM | WWW.ZEEFFPANELS.COM

FULLY TESTED: AAMA 508 | ASTM E330 | ASTM E283 | ASTM E1233 | ASTM E331 | AAMA 505.1

GI01

Date: 05/07/2024

ORIGIN SERIES DESIGN GUIDE CUT-TO-FIT INSTALLATION



KP ELEVATION KEY PLAN
SCALE: NONE

INFO@ZEEFFPANELS.COM | WWW.ZEEFFPANELS.COM

FULLY TESTED: AAMA 508 | ASTM E330 | ASTM E283 | ASTM E1233 | ASTM E331 | AAMA 505.1

KP01

Date: 05/07/2024

ORIGIN SERIES DESIGN GUIDE

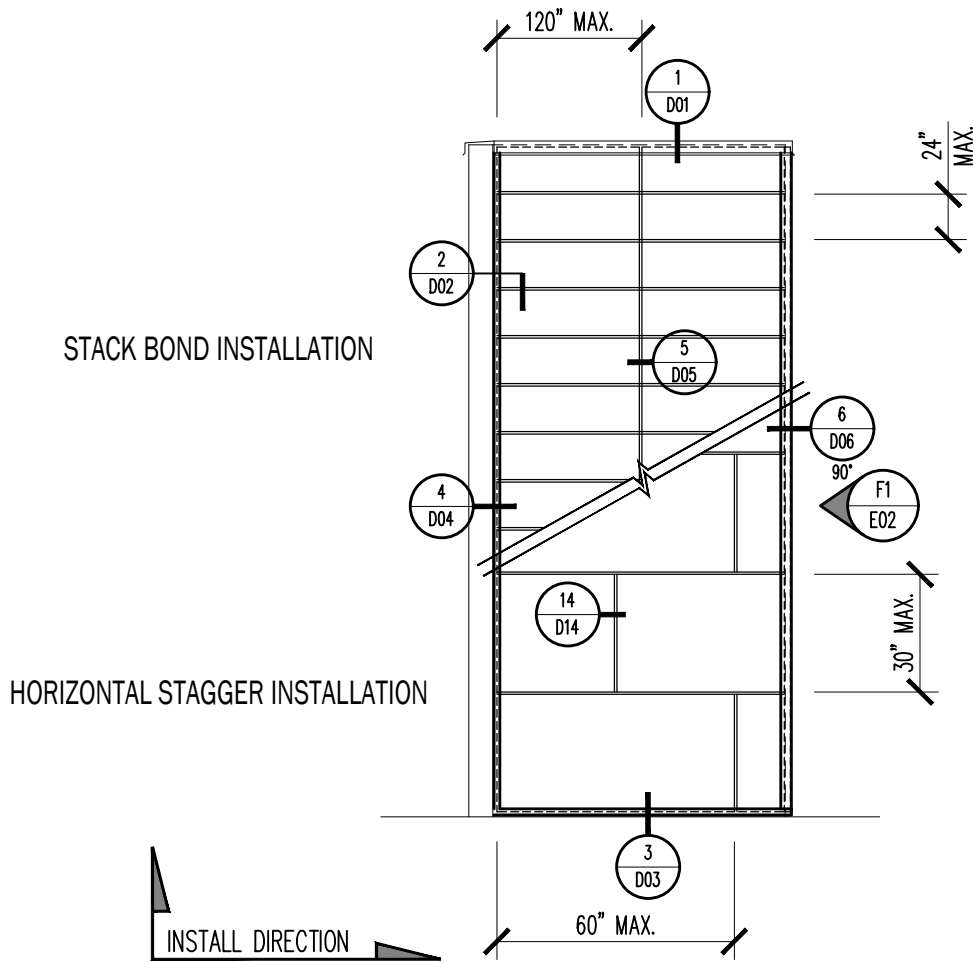
CUT-TO-FIT INSTALLATION



PANEL SIZES AS SHOWN ARE THE RECOMMENDED MAXIMUM WIDTH AND HEIGHTS. IF THERE IS A PANEL SIZE THAT FITS INSIDE THESE GUIDELINES, ZPS CAN EASILY MANUFACTURE IT. PLEASE CONTACT ZPS TO DISCUSS LARGER PANEL SIZES.

MAXIMUM PANEL SIZE LIMITS

WIDTH	HEIGHT
120"	24"
60"	30"
48"	48"
24"	120"



S1 SIDE ELEVATION
SCALE: NONE

INFO@ZEEFFPANELS.COM | WWW.ZEEFFPANELS.COM

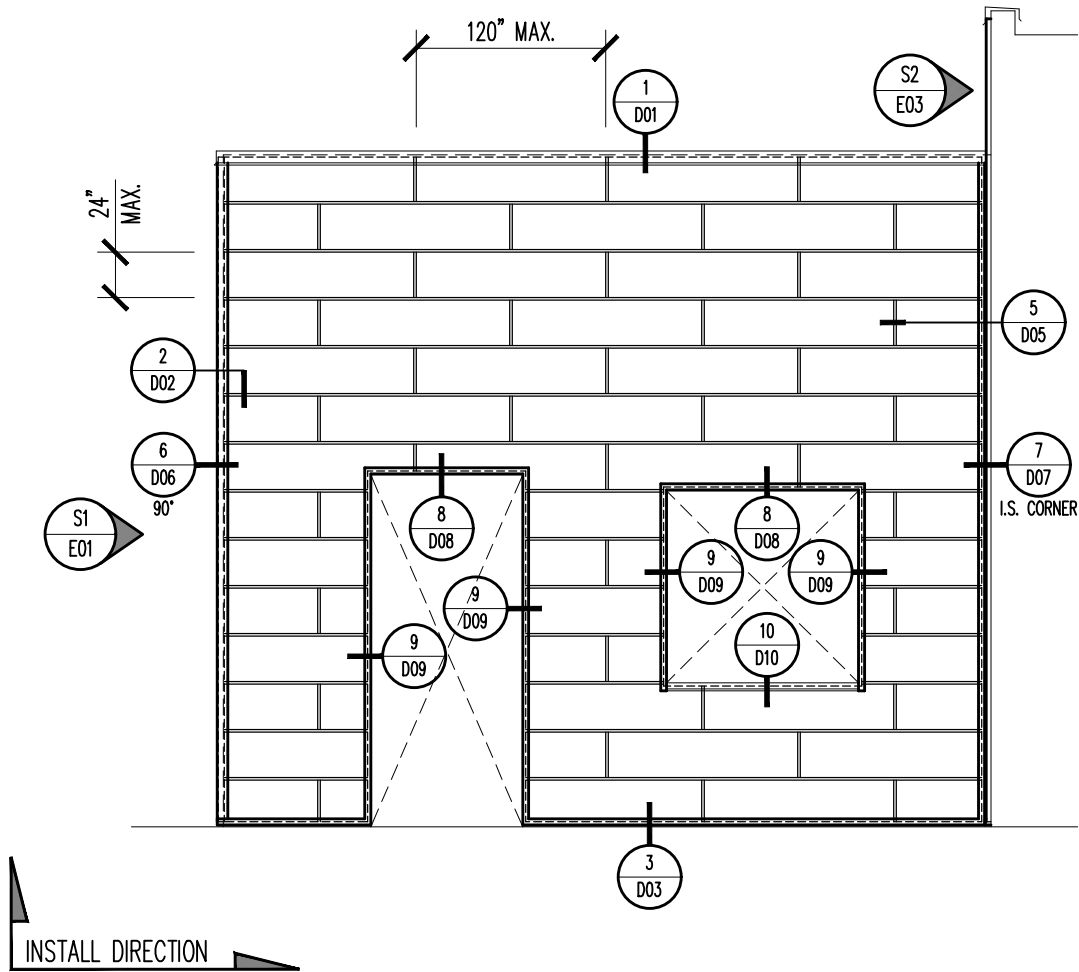
FULLY TESTED: AAMA 508 | ASTM E330 | ASTM E283 | ASTM E1233 | ASTM E331 | AAMA 505.1

E01

Date: 05/07/2024

ORIGIN SERIES DESIGN GUIDE

CUT-TO-FIT INSTALLATION



FENESTRATION SET BACK FROM FACE OF PANEL
HORIZONTAL STAGGER INSTALLATION

F1 FRONT ELEVATION
SCALE: NONE

INFO@ZEEFFPANELS.COM | WWW.ZEEFFPANELS.COM

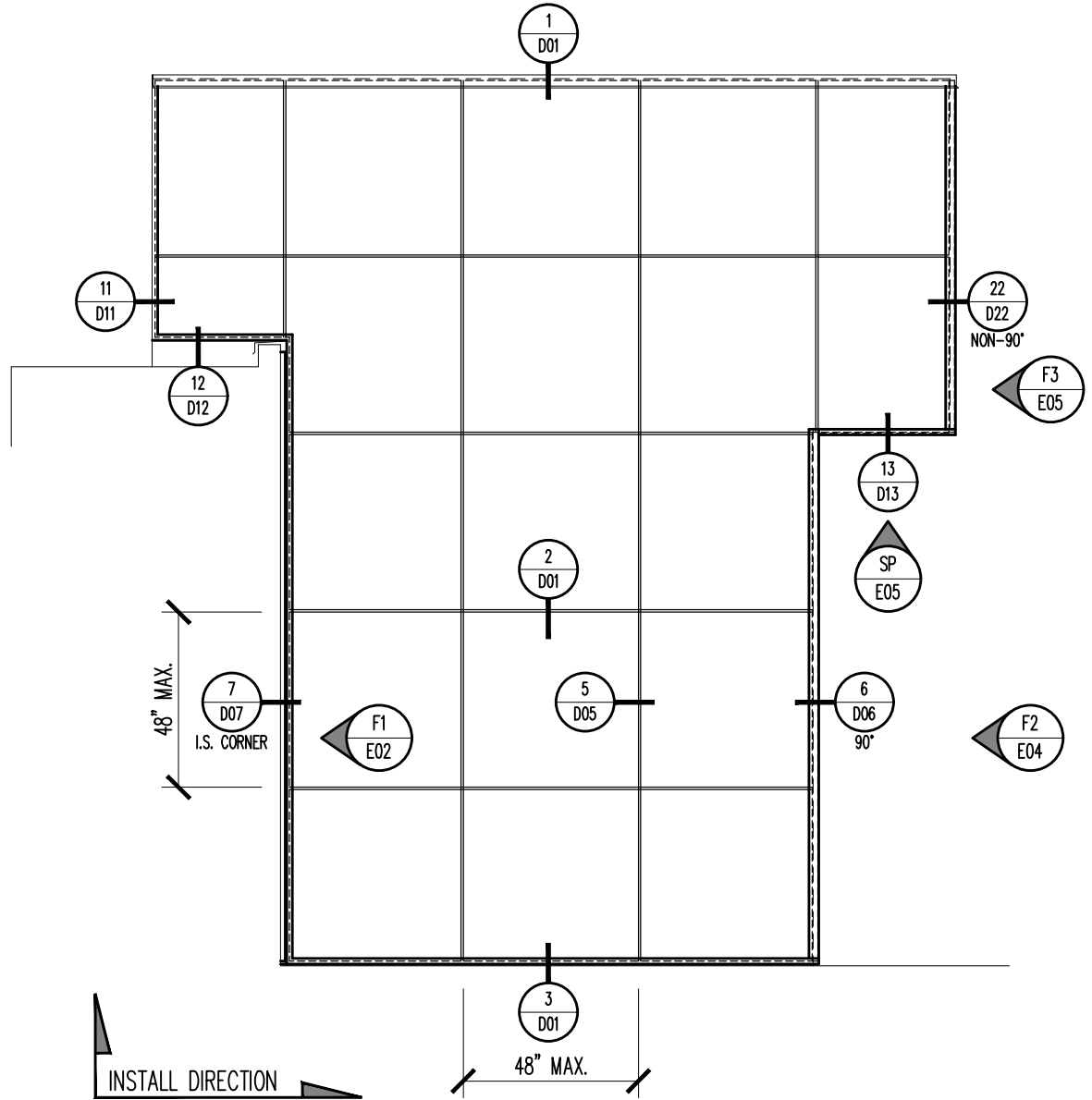
FULLY TESTED: AAMA 508 | ASTM E330 | ASTM E283 | ASTM E1233 | ASTM E331 | AAMA 505.1

Date: 05/07/2024

E02

ORIGIN SERIES DESIGN GUIDE

CUT-TO-FIT INSTALLATION



STACK BOND INSTALLATION

S2 SIDE ELEVATION
SCALE: NONE

INFO@ZEEFFPANELS.COM | WWW.ZEEFFPANELS.COM

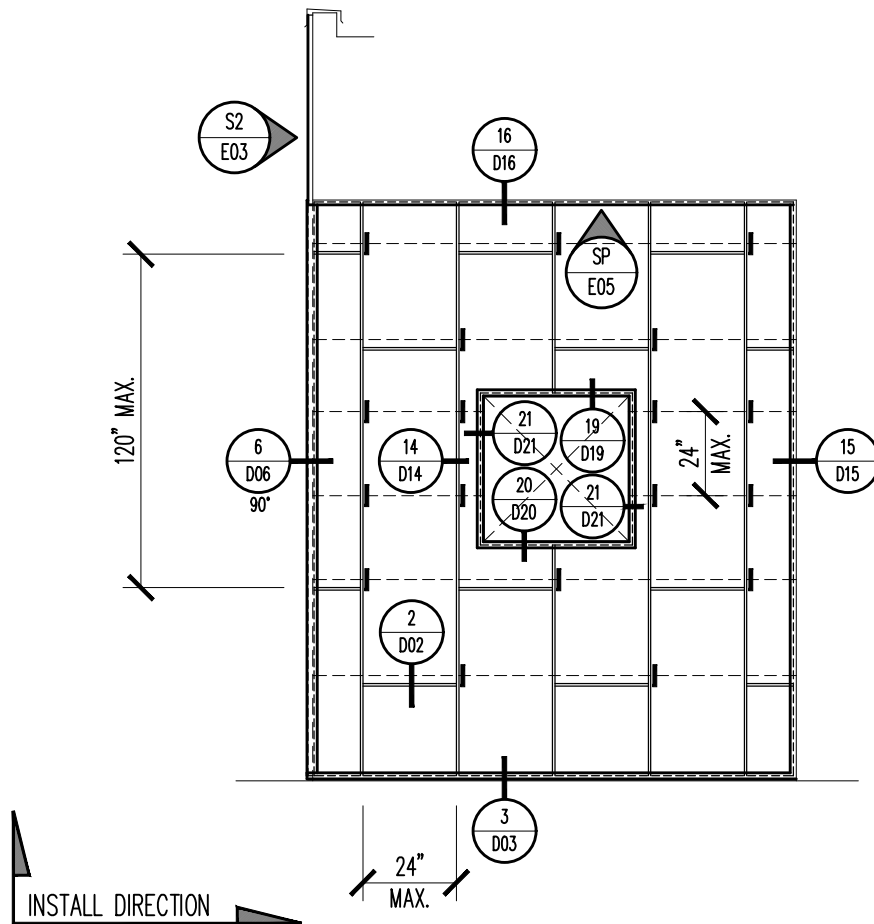
FULLY TESTED: AAMA 508 | ASTM E330 | ASTM E283 | ASTM E1233 | ASTM E331 | AAMA 505.1

Date: 05/07/2024

E03

ORIGIN SERIES DESIGN GUIDE

CUT-TO-FIT INSTALLATION



FENESTRATION FLUSH WITH FACE OF PANEL
VERTICAL STAGGER INSTALLATION

F2 FRONT ELEVATION
SCALE: NONE

INFO@ZEEFFPANELS.COM | WWW.ZEEFFPANELS.COM

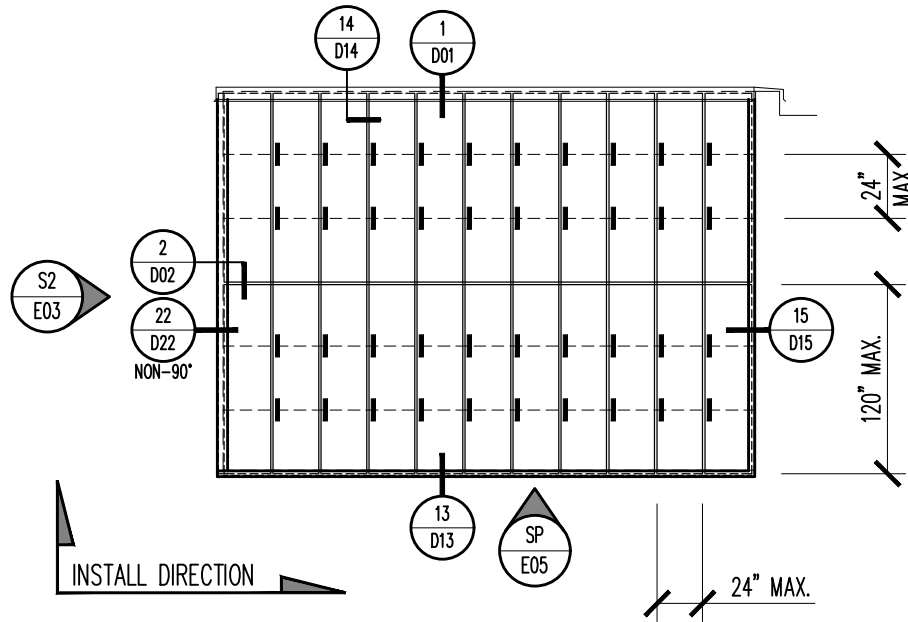
FULLY TESTED: AAMA 508 | ASTM E330 | ASTM E283 | ASTM E1233 | ASTM E331 | AAMA 505.1

Date: 05/07/2024

E04

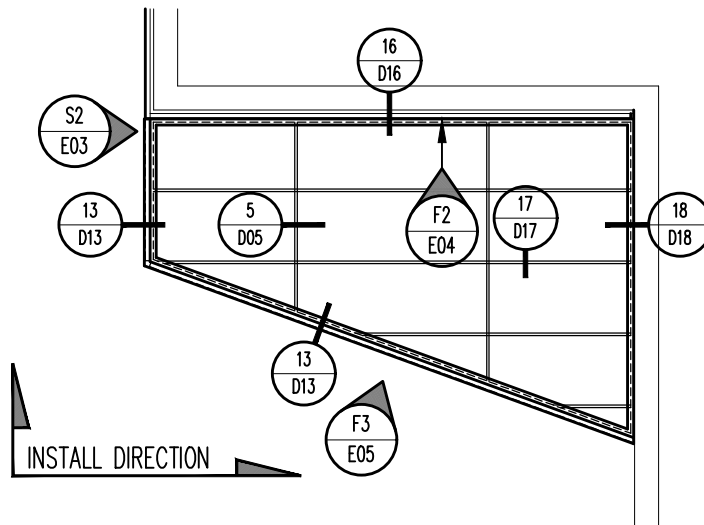
ORIGIN SERIES DESIGN GUIDE

CUT-TO-FIT INSTALLATION



STACK BOND INSTALLATION

F3 FRONT ELEVATION
SCALE: NONE



SP SOFFIT PLAN
SCALE: NONE

INFO@ZEEFFPANELS.COM | WWW.ZEEFFPANELS.COM

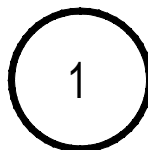
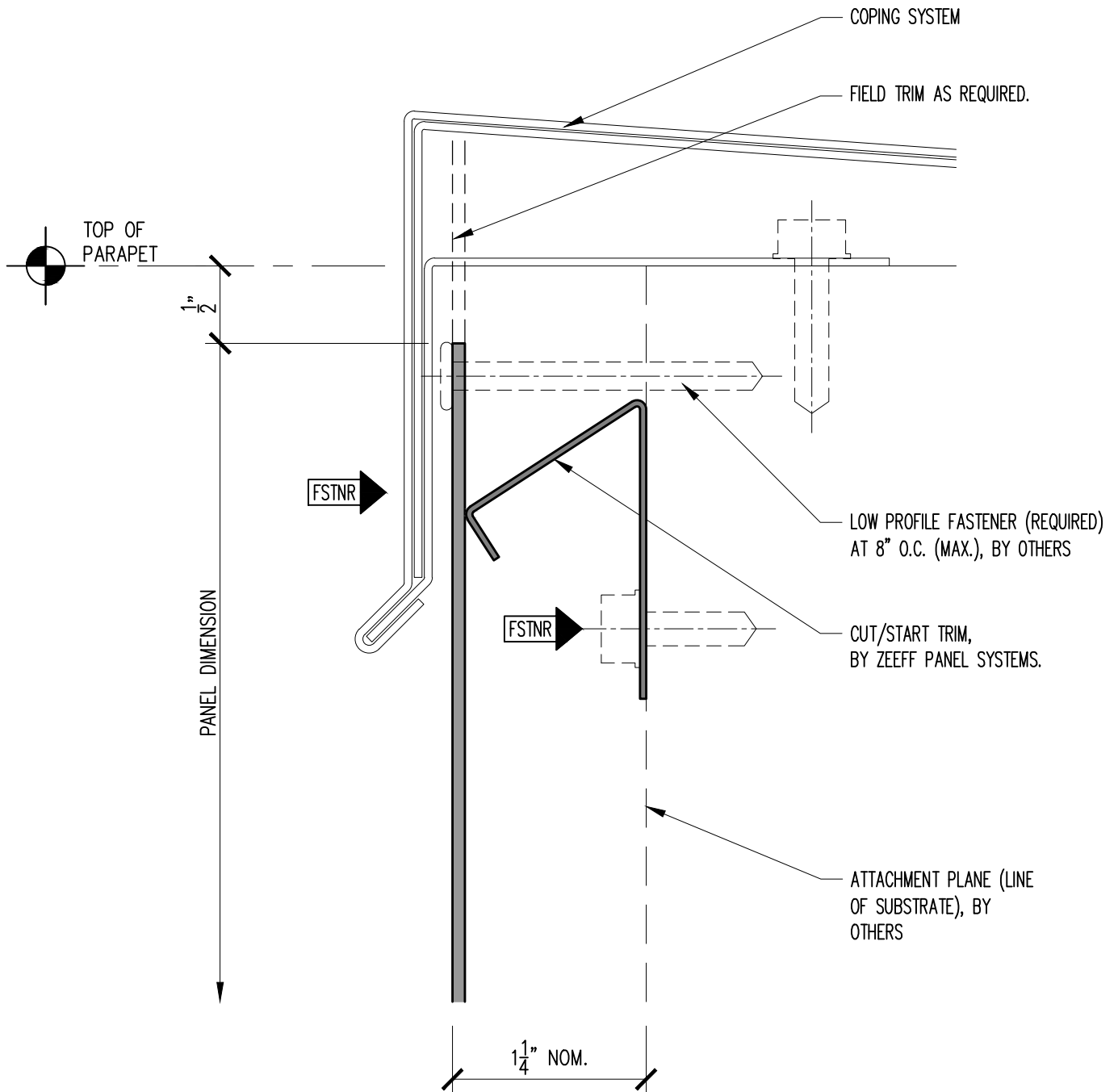
FULLY TESTED: AAMA 508 | ASTM E330 | ASTM E283 | ASTM E1233 | ASTM E331 | AAMA 505.1

E05

Date: 05/07/2024

ORIGIN SERIES DESIGN GUIDE

CUT-TO-FIT INSTALLATION



PANEL TERMINATION AT COPING

SCALE: FULL

INFO@ZEEFFPANELS.COM | WWW.ZEEFFPANELS.COM

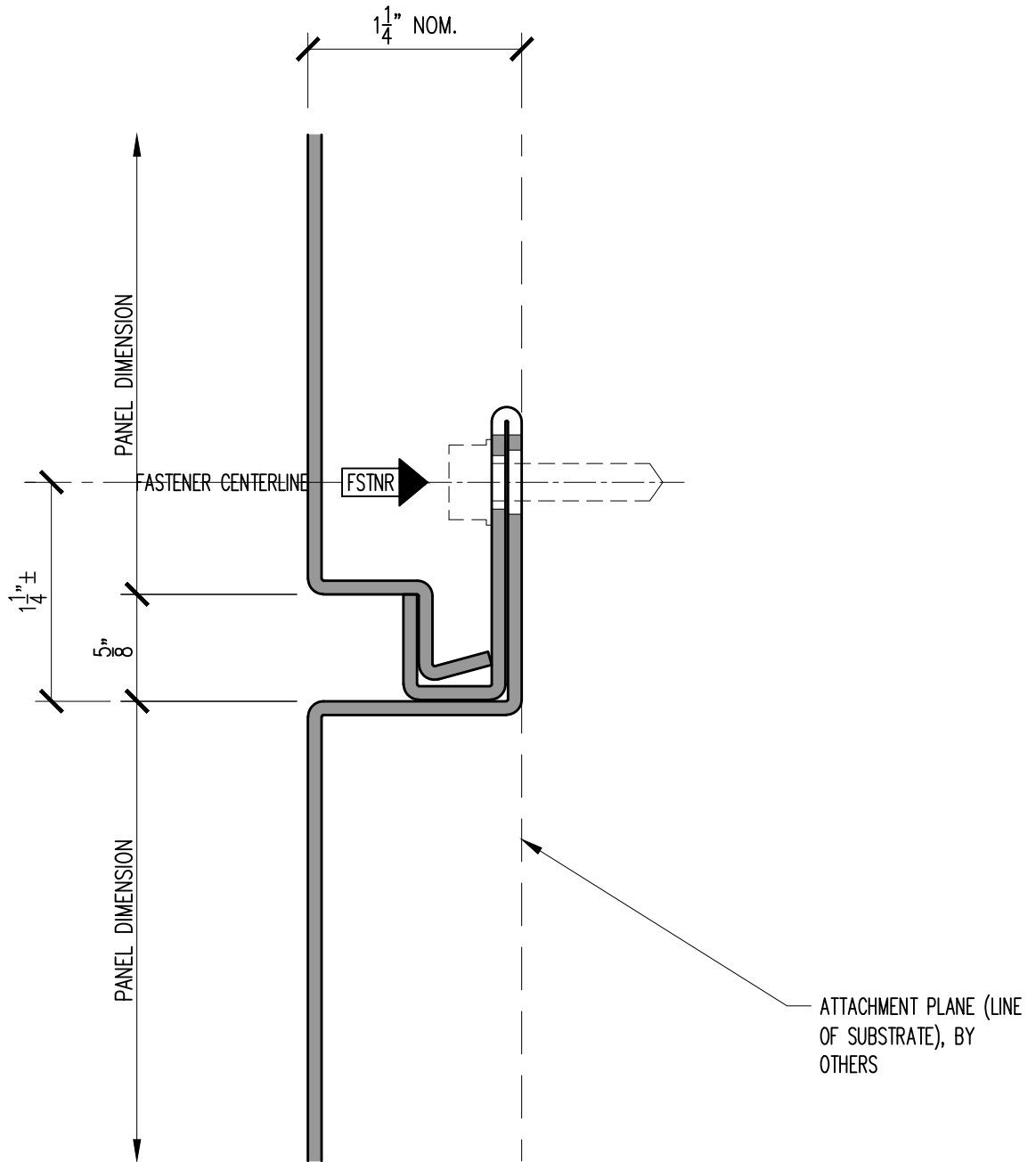
FULLY TESTED: AAMA 508 | ASTM E330 | ASTM E283 | ASTM E1233 | ASTM E331 | AAMA 505.1

D01

Date: 05/07/2024

ORIGIN SERIES DESIGN GUIDE

CUT-TO-FIT INSTALLATION



2

PANEL HORIZONTAL JOINT

SCALE: FULL

INFO@ZEEFFPANELS.COM | WWW.ZEEFFPANELS.COM

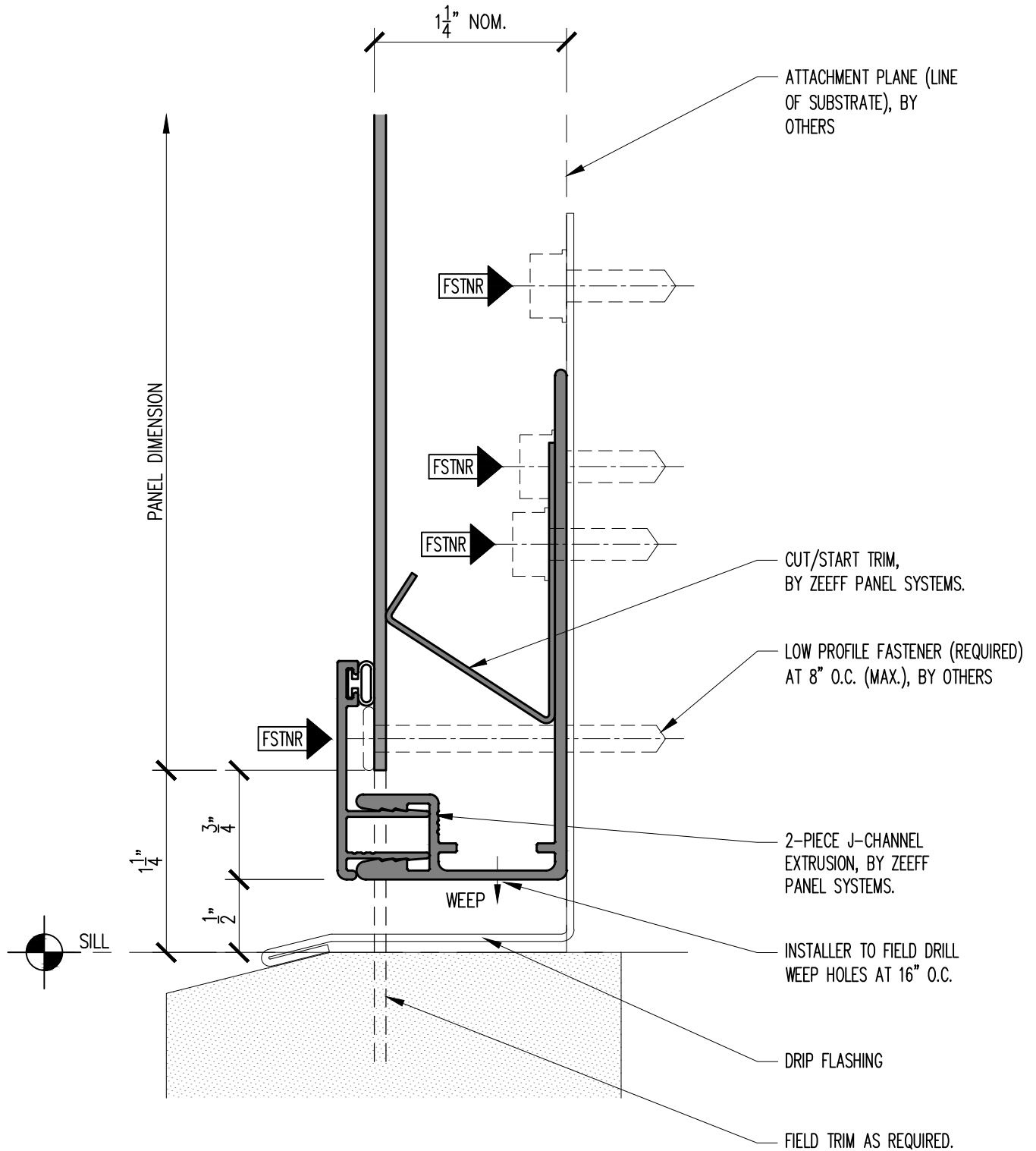
FULLY TESTED: AAMA 508 | ASTM E330 | ASTM E283 | ASTM E1233 | ASTM E331 | AAMA 505.1

D02

Date: 05/07/2024

ORIGIN SERIES DESIGN GUIDE

CUT-TO-FIT INSTALLATION



3

PANEL BASE TERMINATION

SCALE: FULL

INFO@ZEEFFPANELS.COM | WWW.ZEEFFPANELS.COM

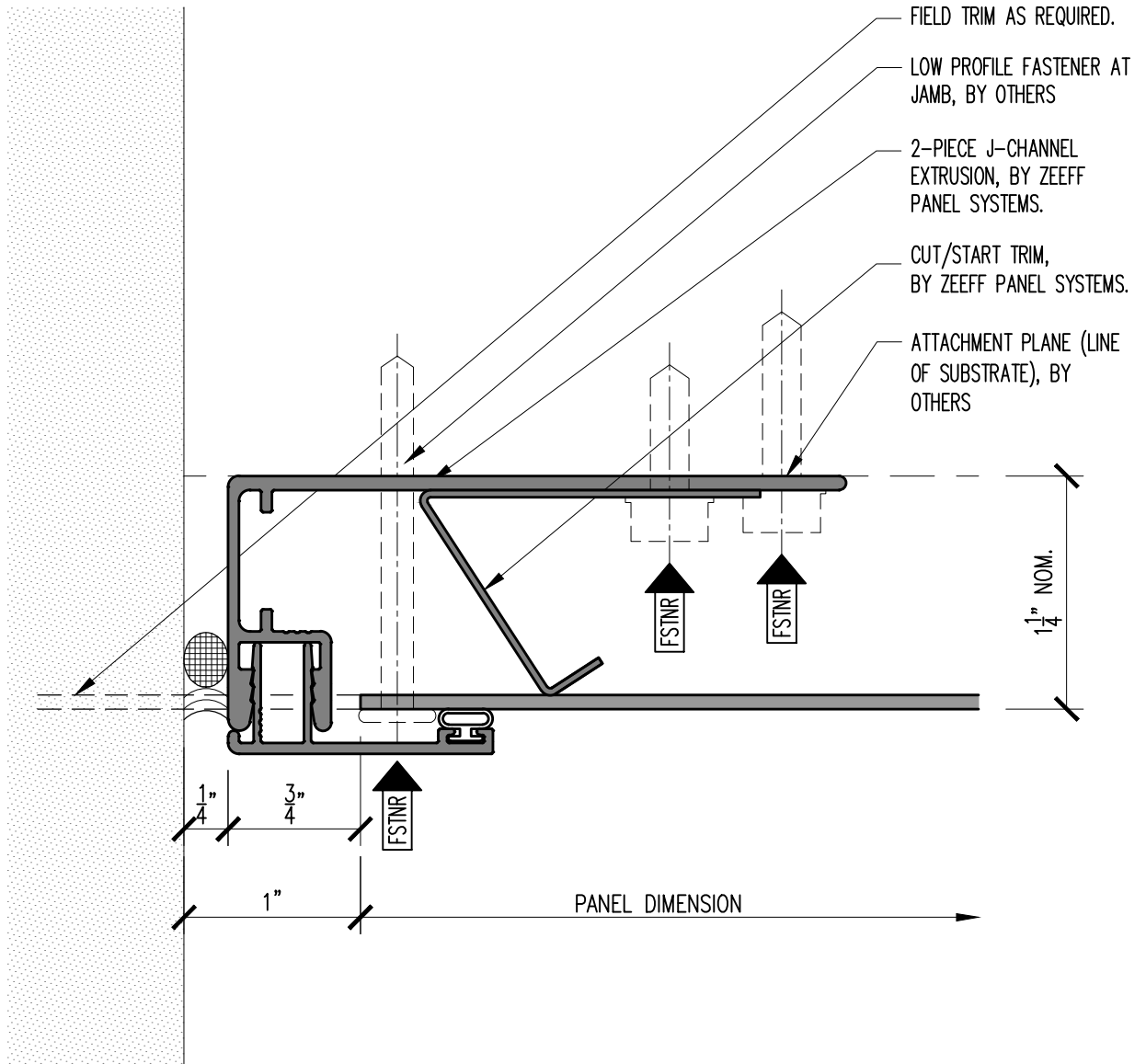
FULLY TESTED: AAMA 508 | ASTM E330 | ASTM E283 | ASTM E1233 | ASTM E331 | AAMA 505.1

Date: 05/07/2024

D03

ORIGIN SERIES DESIGN GUIDE

CUT-TO-FIT INSTALLATION



4

PANEL JAMB TERMINATION

SCALE: FULL

INFO@ZEEFFPANELS.COM | WWW.ZEEFFPANELS.COM

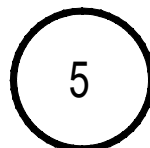
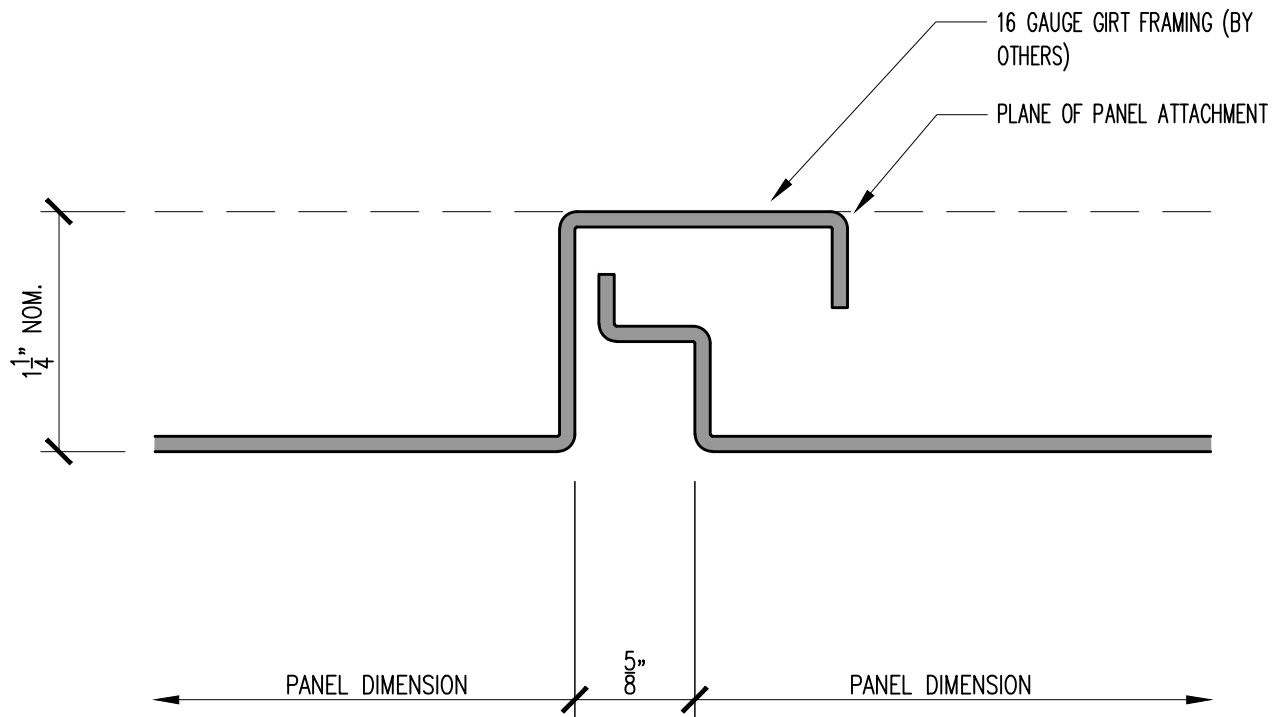
FULLY TESTED: AAMA 508 | ASTM E330 | ASTM E283 | ASTM E1233 | ASTM E331 | AAMA 505.1

D04

Date: 05/07/2024

ORIGIN SERIES DESIGN GUIDE

CUT-TO-FIT INSTALLATION



PANEL VERTICAL JOINT

SCALE: FULL

INFO@ZEEFFPANELS.COM | WWW.ZEEFFPANELS.COM

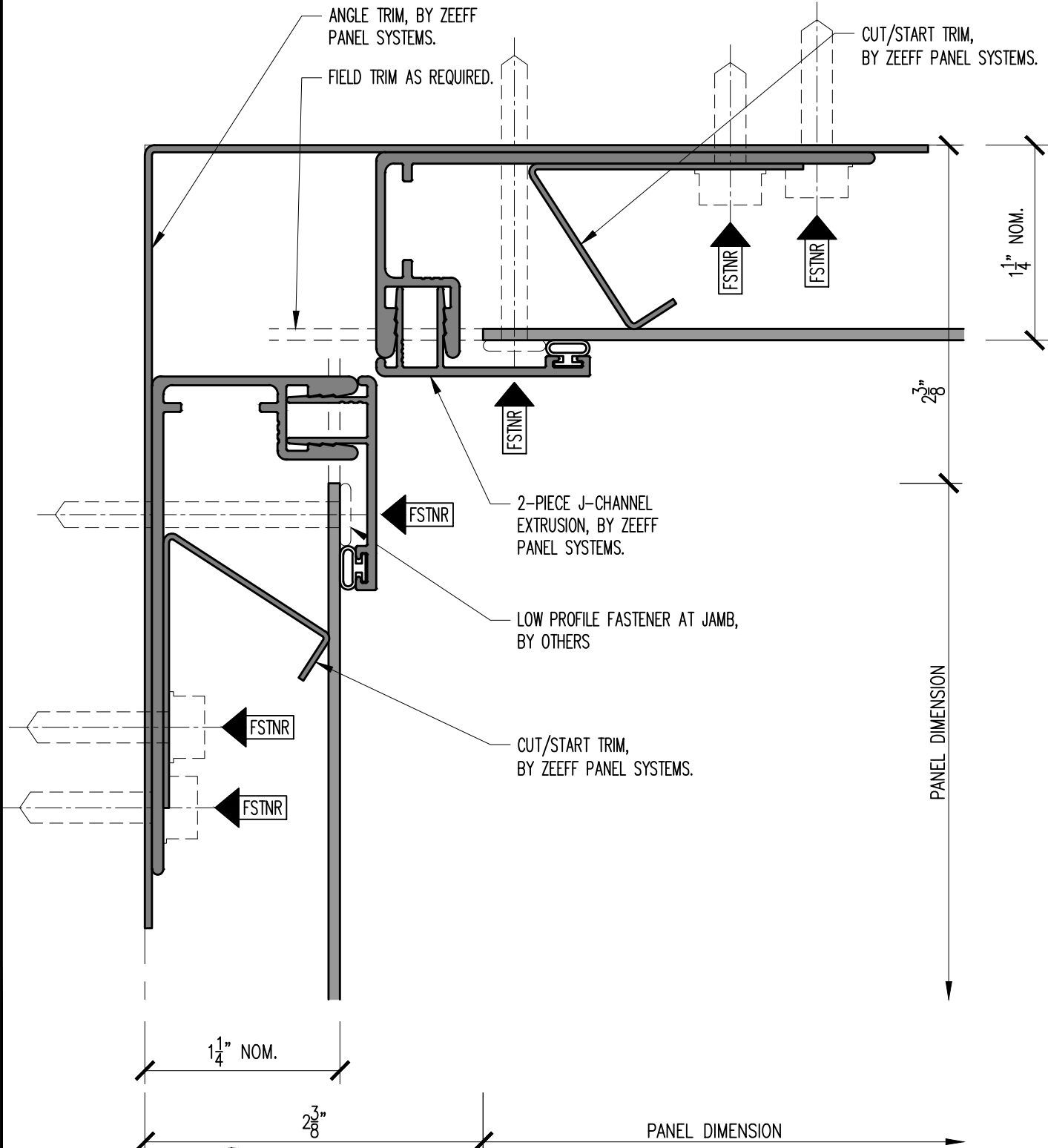
FULLY TESTED: AAMA 508 | ASTM E330 | ASTM E283 | ASTM E1233 | ASTM E331 | AAMA 505.1

D05

Date: 05/07/2024

ORIGIN SERIES DESIGN GUIDE

CUT-TO-FIT INSTALLATION



7 90° INSIDE CORNER DETAIL
SCALE: FULL

INFO@ZEEFFPANELS.COM | WWW.ZEEFFPANELS.COM

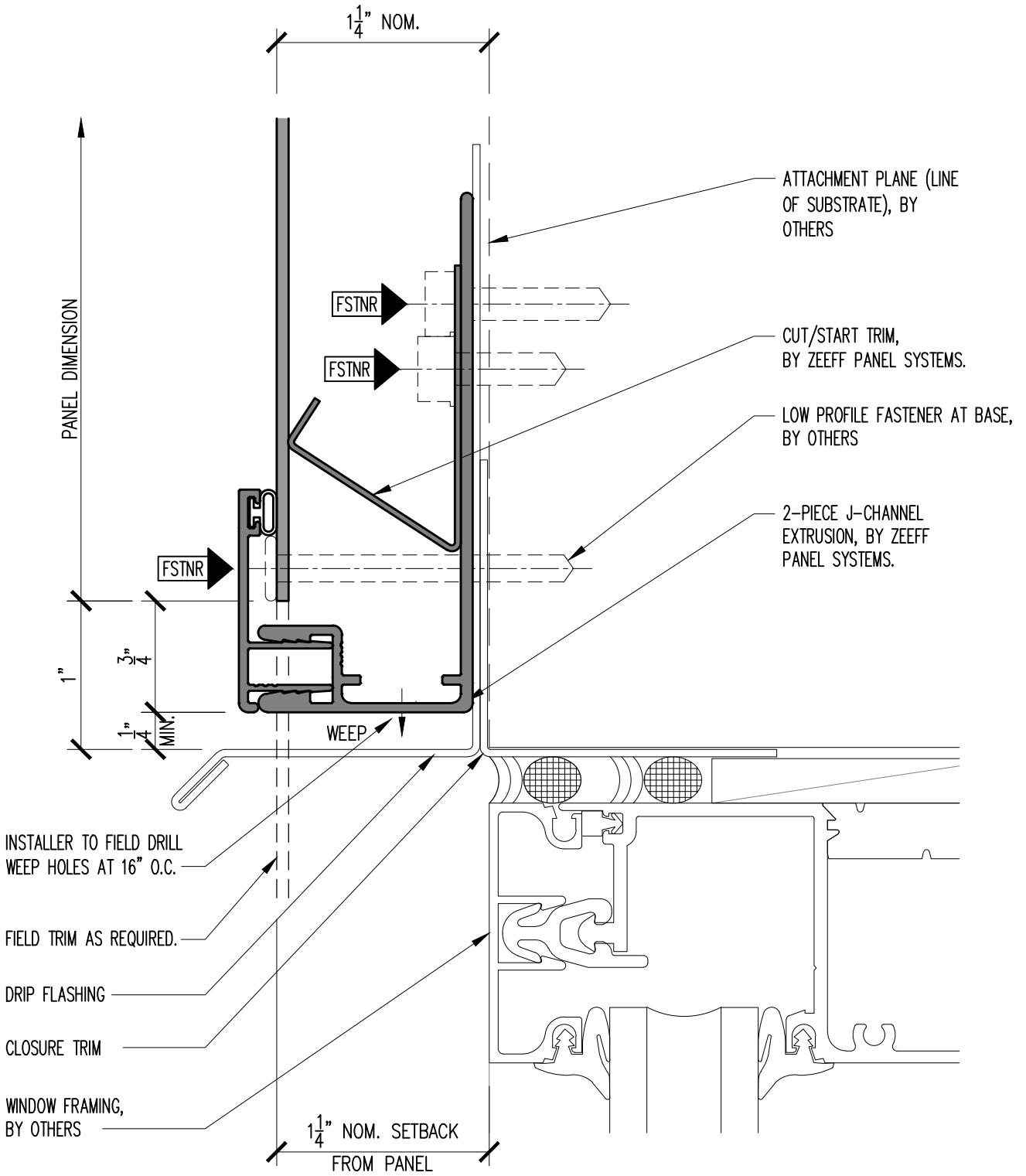
FULLY TESTED: AAMA 508 | ASTM E330 | ASTM E283 | ASTM E1233 | ASTM E331 | AAMA 505.1

D07

Date: 05/07/2024

ORIGIN SERIES DESIGN GUIDE

CUT-TO-FIT INSTALLATION



8

PANEL BASE DETAIL AT WINDOW / DOOR HEAD

SCALE: FULL

INFO@ZEEFFPANELS.COM | WWW.ZEEFFPANELS.COM

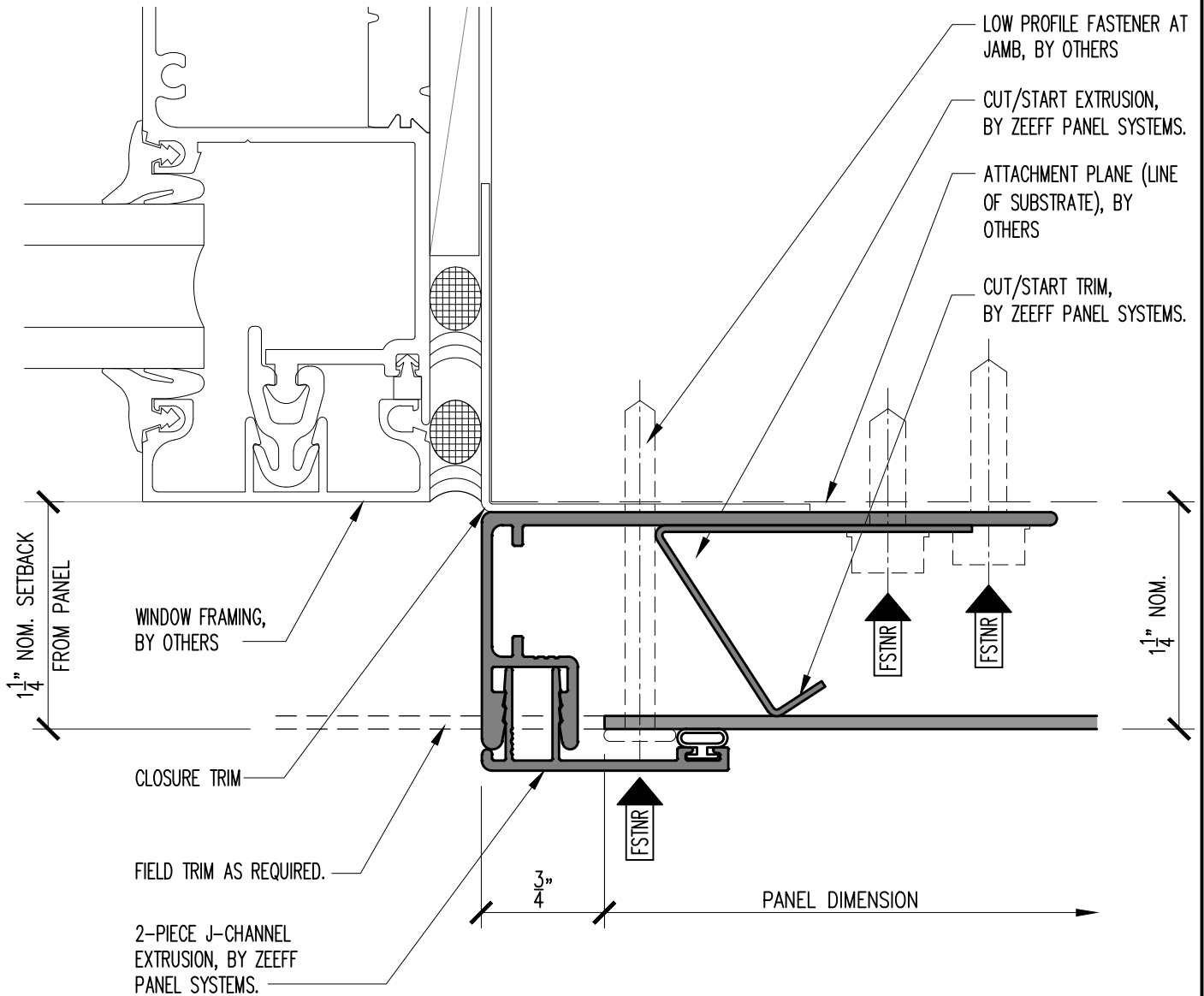
FULLY TESTED: AAMA 508 | ASTM E330 | ASTM E283 | ASTM E1233 | ASTM E331 | AAMA 505.1

D08

Date: 05/07/2024

ORIGIN SERIES DESIGN GUIDE

CUT-TO-FIT INSTALLATION



9

PANEL JAMB DETAIL AT WINDOW / DOOR JAMB

SCALE: FULL

INFO@ZEEFFPANELS.COM | WWW.ZEEFFPANELS.COM

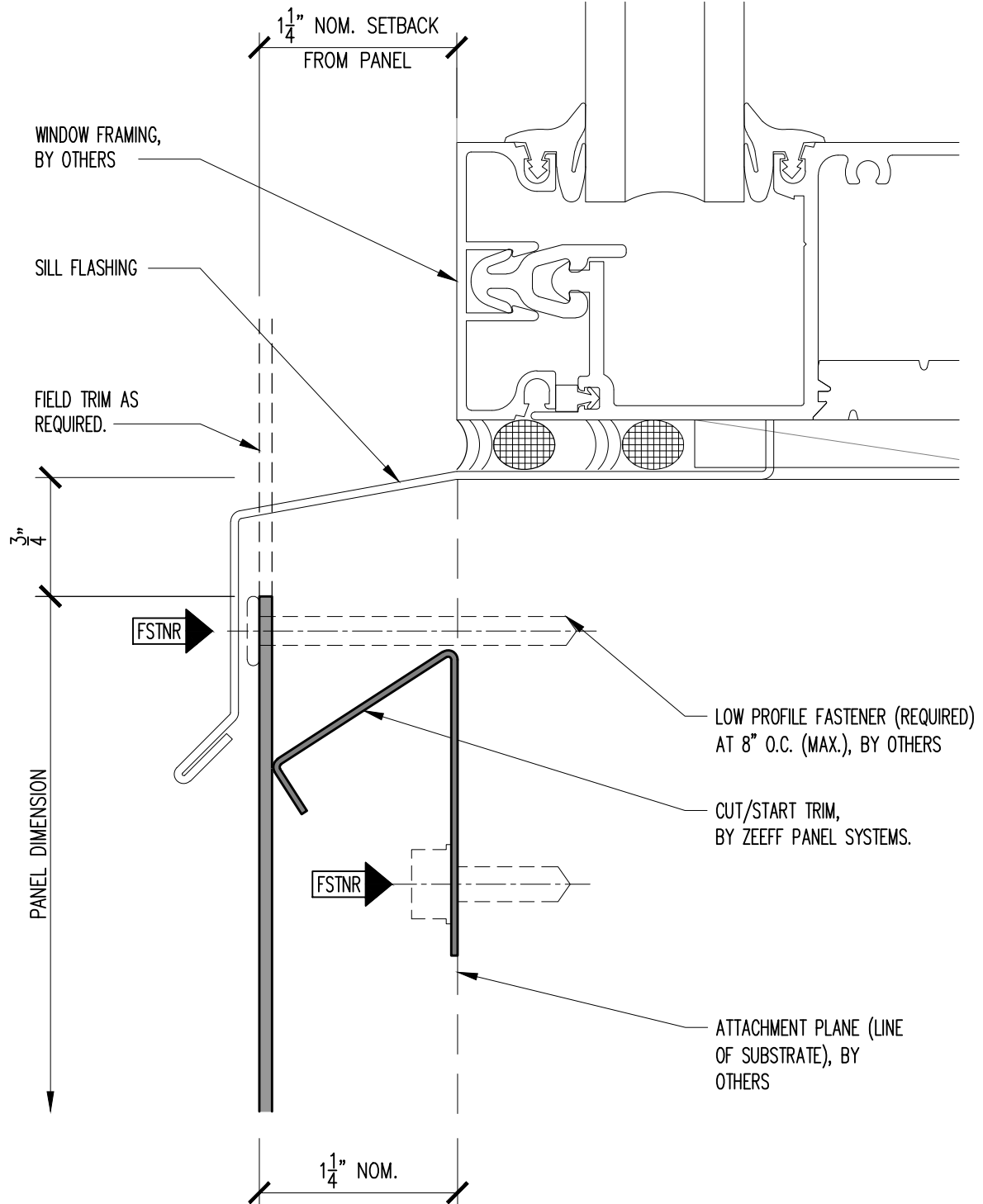
FULLY TESTED: AAMA 508 | ASTM E330 | ASTM E283 | ASTM E1233 | ASTM E331 | AAMA 505.1

D09

Date: 05/07/2024

ORIGIN SERIES DESIGN GUIDE

CUT-TO-FIT INSTALLATION



10

PANEL HEAD DETAIL AT WINDOW SILL

SCALE: FULL

INFO@ZEEFFPANELS.COM | WWW.ZEEFFPANELS.COM

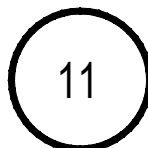
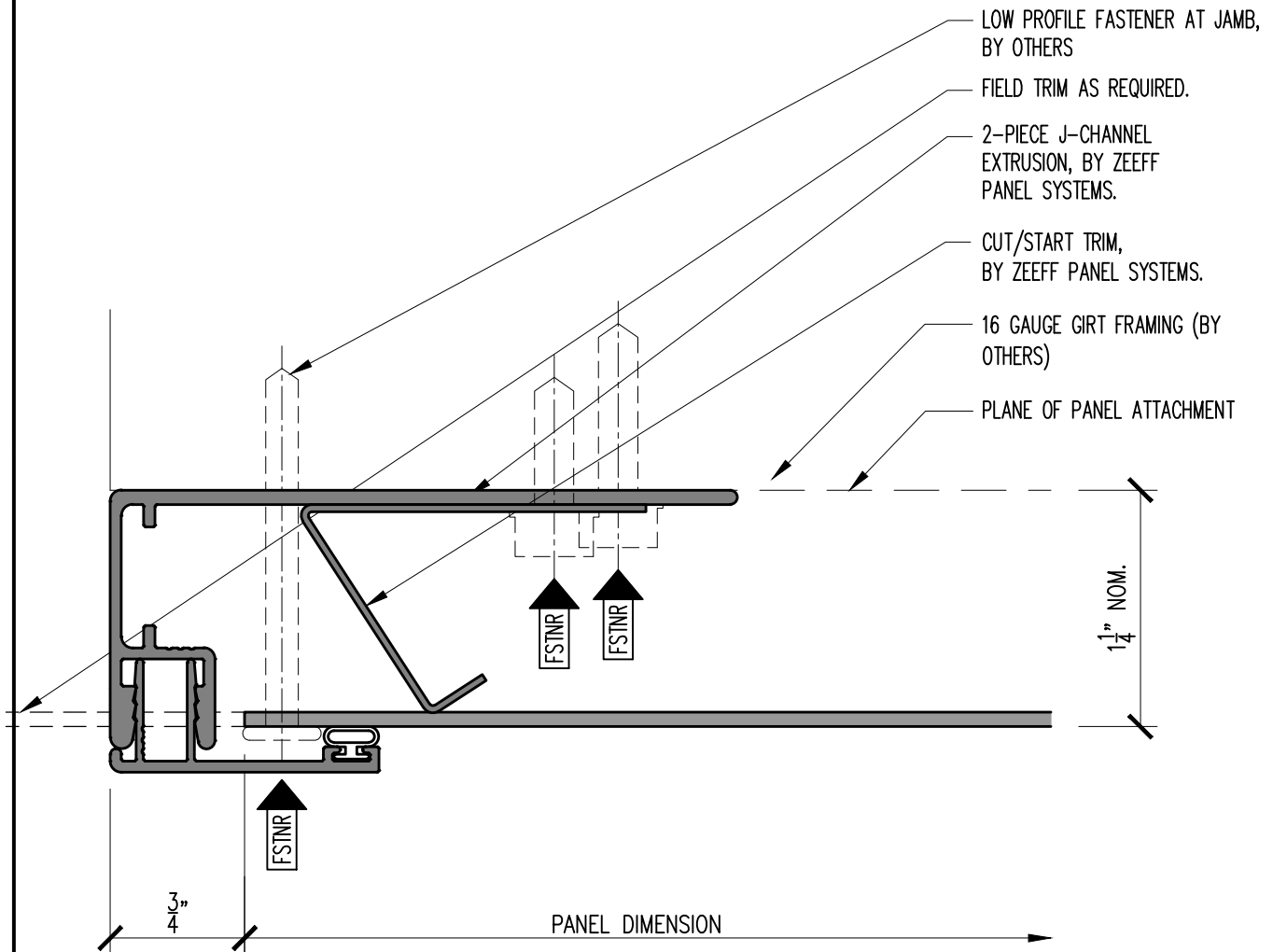
FULLY TESTED: AAMA 508 | ASTM E330 | ASTM E283 | ASTM E1233 | ASTM E331 | AAMA 505.1

D10

Date: 05/07/2024

ORIGIN SERIES DESIGN GUIDE

CUT-TO-FIT INSTALLATION



PANEL JAMB TERMINATION AT END WALL

SCALE: FULL

INFO@ZEEFFPANELS.COM | WWW.ZEEFFPANELS.COM

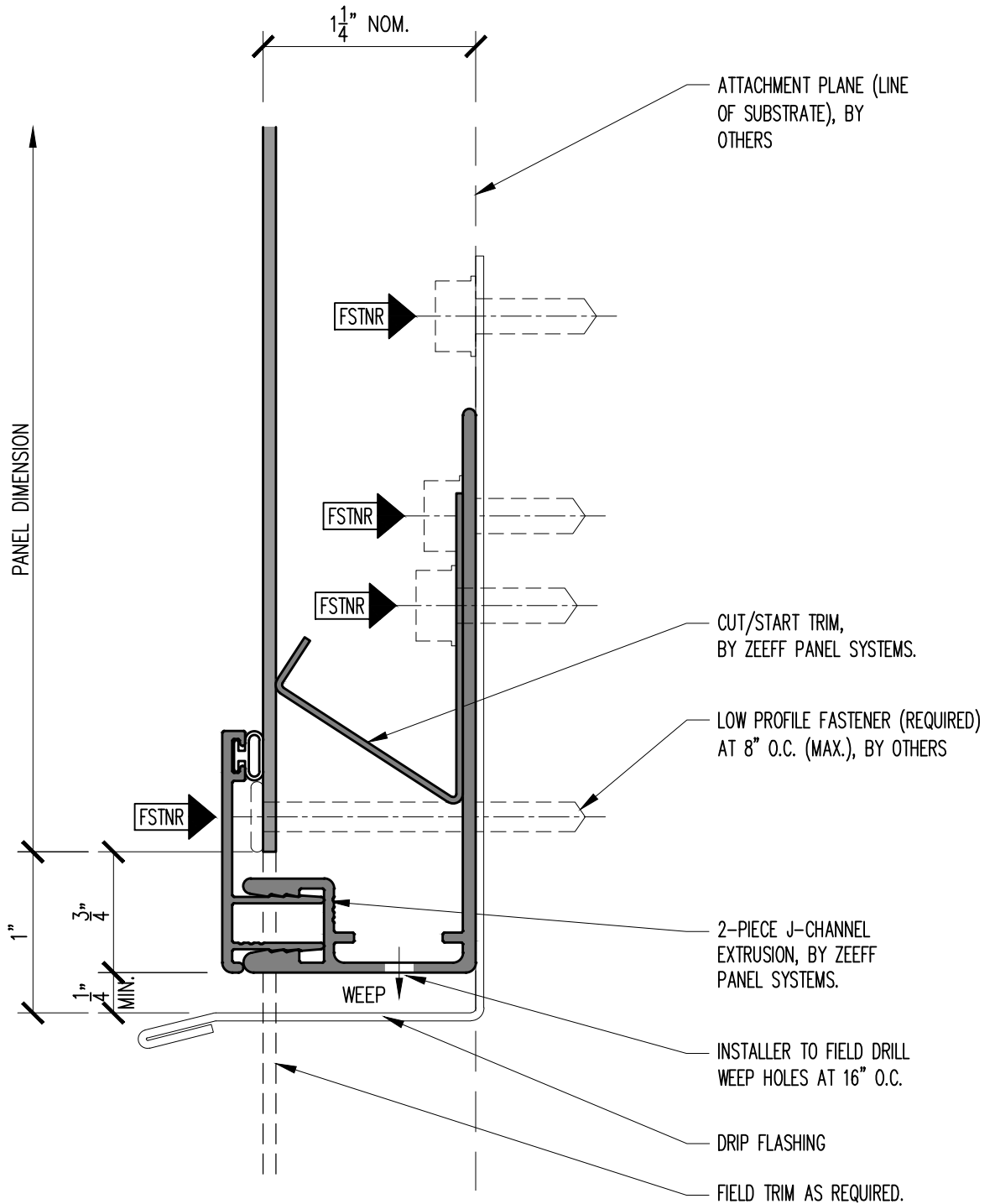
FULLY TESTED: AAMA 508 | ASTM E330 | ASTM E283 | ASTM E1233 | ASTM E331 | AAMA 505.1

D11

Date: 05/07/2024

ORIGIN SERIES DESIGN GUIDE

CUT-TO-FIT INSTALLATION



12

PANEL BASE TERMINATION OVER ROOF

SCALE: FULL

INFO@ZEEFFPANELS.COM | WWW.ZEEFFPANELS.COM

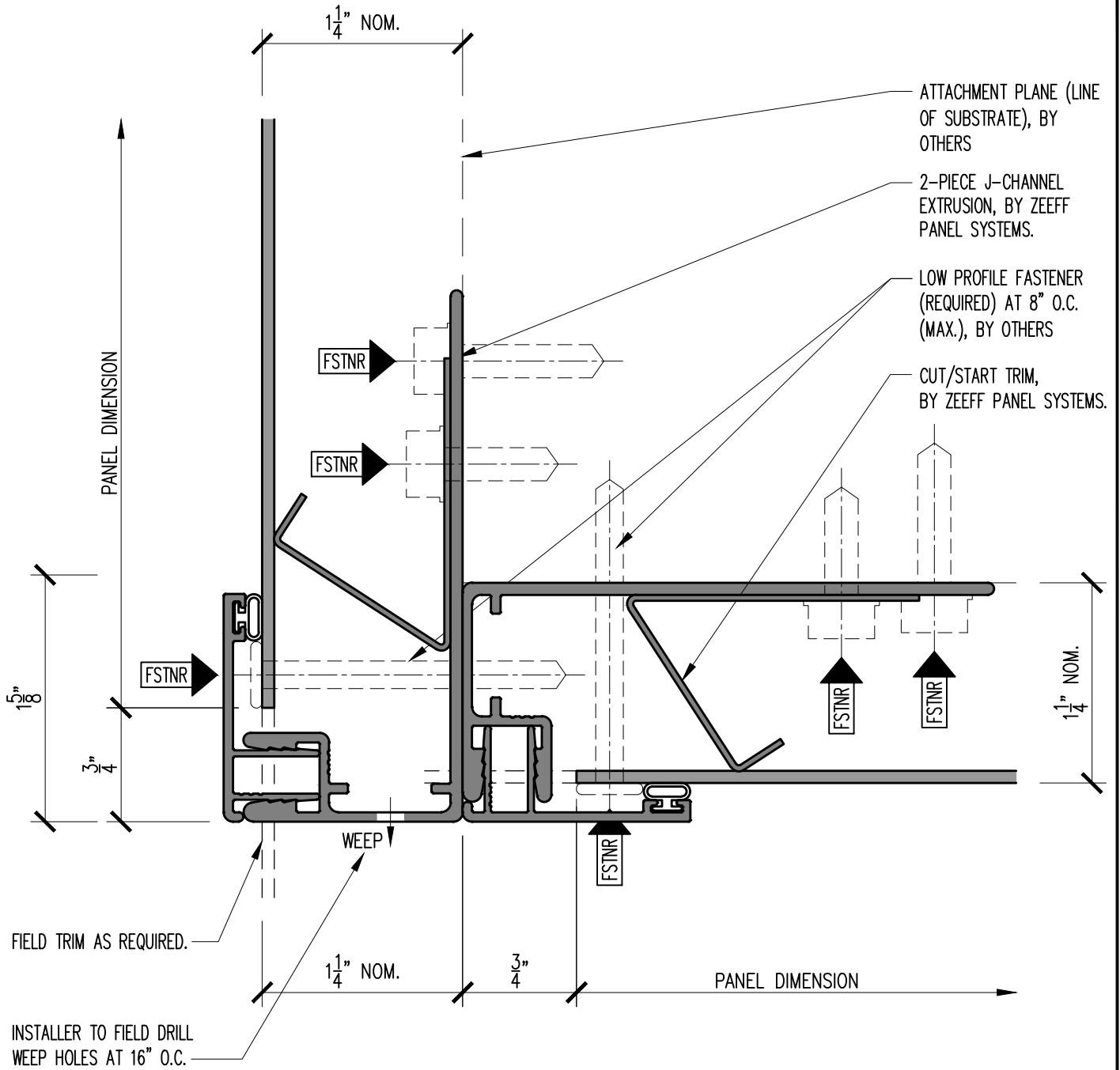
FULLY TESTED: AAMA 508 | ASTM E330 | ASTM E283 | ASTM E1233 | ASTM E331 | AAMA 505.1

Date: 05/07/2024

D12

ORIGIN SERIES DESIGN GUIDE

CUT-TO-FIT INSTALLATION



13

FASCIA TO SOFFIT TRANSITION

SCALE: FULL

INFO@ZEEFFPANELS.COM | WWW.ZEEFFPANELS.COM

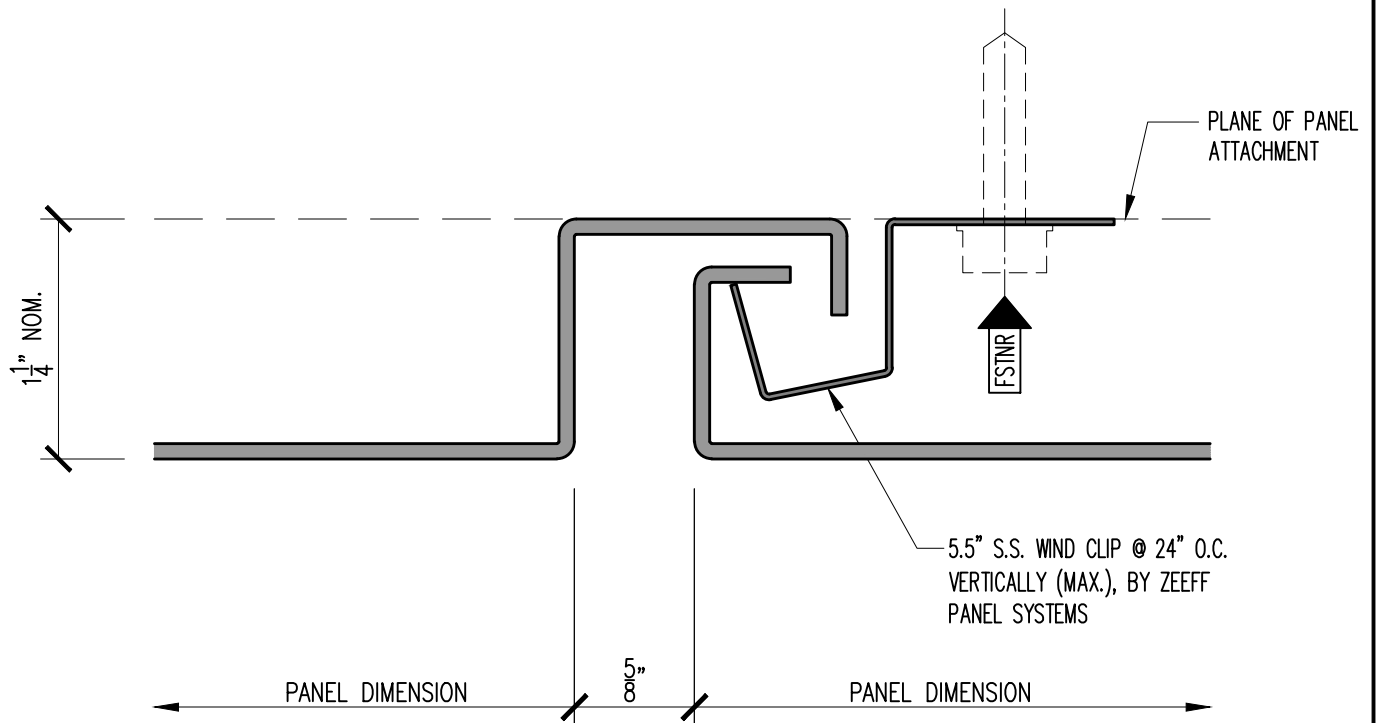
FULLY TESTED: AAMA 508 | ASTM E330 | ASTM E283 | ASTM E1233 | ASTM E331 | AAMA 505.1

D13

Date: 05/07/2024

ORIGIN SERIES DESIGN GUIDE

CUT-TO-FIT INSTALLATION



14

PANEL VERTICAL JOINT FOR PANELS OVER 48" TALL

SCALE: FULL

INFO@ZEEFFPANELS.COM | WWW.ZEEFFPANELS.COM

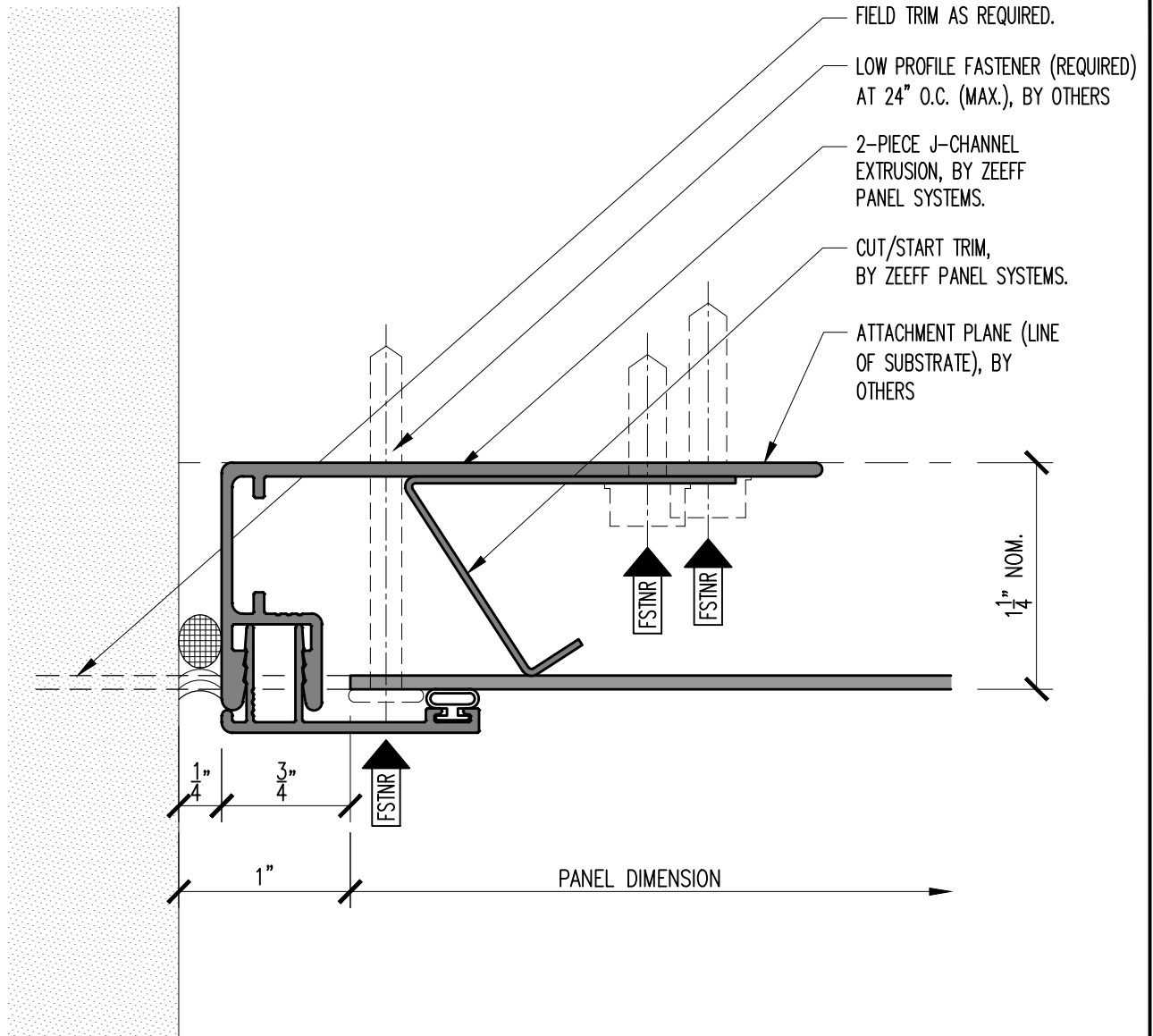
FULLY TESTED: AAMA 508 | ASTM E330 | ASTM E283 | ASTM E1233 | ASTM E331 | AAMA 505.1

D14

Date: 05/07/2024

ORIGIN SERIES DESIGN GUIDE

CUT-TO-FIT INSTALLATION



15

PANEL JAMB TERMINATION FOR PANELS OVER 48" TALL

SCALE: FULL

INFO@ZEEFFPANELS.COM | WWW.ZEEFFPANELS.COM

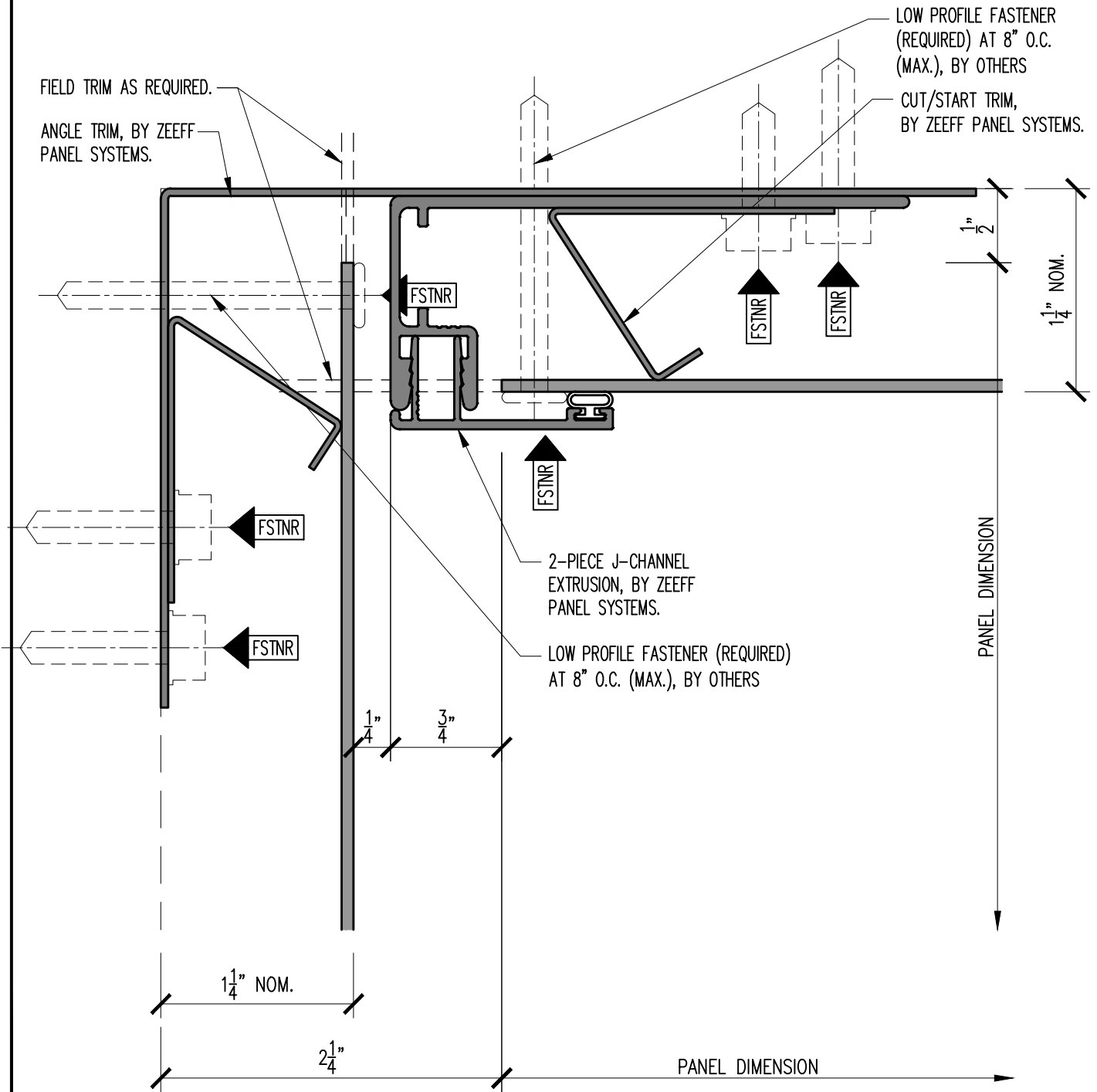
FULLY TESTED: AAMA 508 | ASTM E330 | ASTM E283 | ASTM E1233 | ASTM E331 | AAMA 505.1

D15

Date: 05/07/2024

ORIGIN SERIES DESIGN GUIDE

CUT-TO-FIT INSTALLATION



16

WALL TO SOFFIT TRANSITION

SCALE: FULL

INFO@ZEEFFPANELS.COM | WWW.ZEEFFPANELS.COM

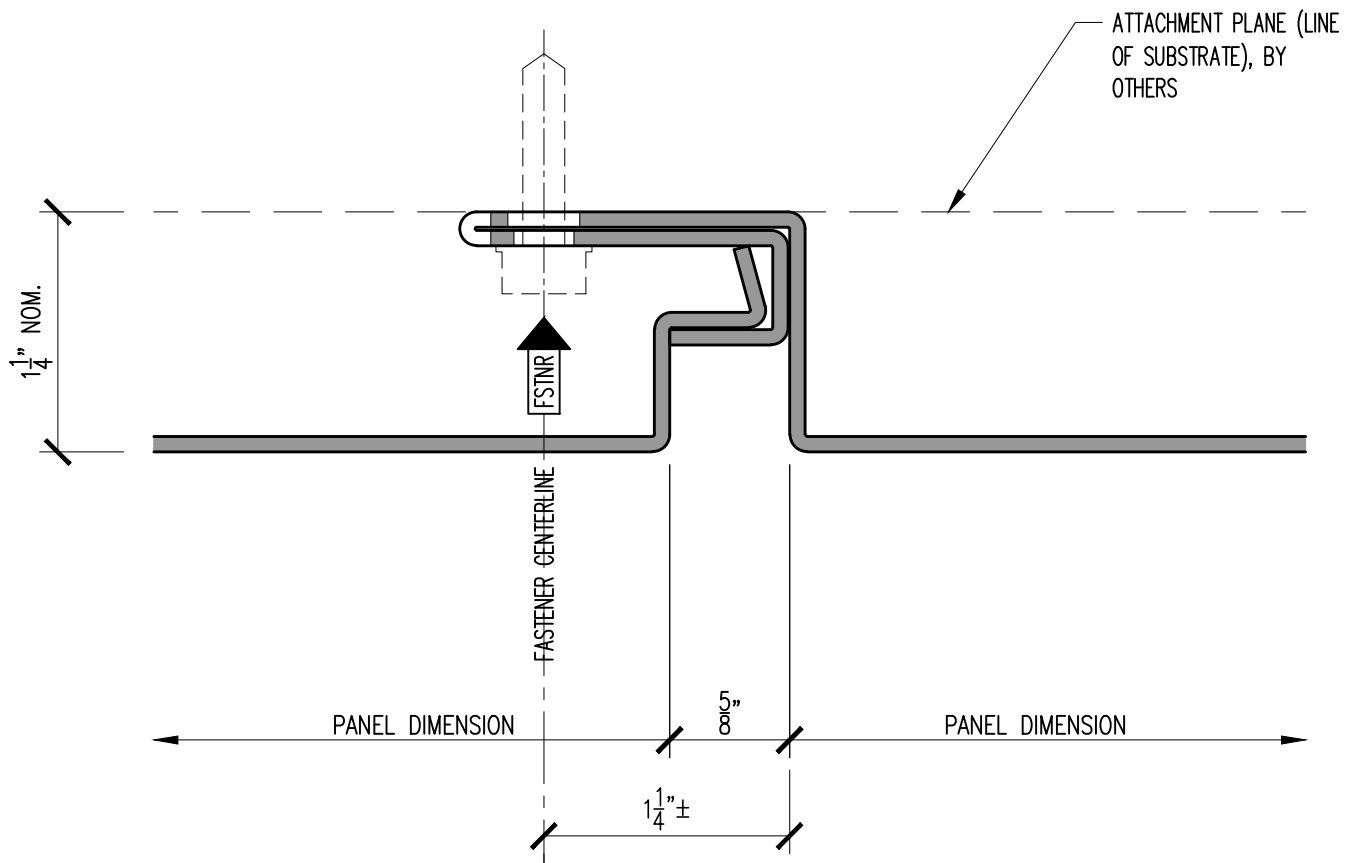
FULLY TESTED: AAMA 508 | ASTM E330 | ASTM E283 | ASTM E1233 | ASTM E331 | AAMA 505.1

Date: 05/07/2024

D16

ORIGIN SERIES DESIGN GUIDE

CUT-TO-FIT INSTALLATION



17

SOFFIT PANEL HORIZONTAL JOINT

SCALE: FULL

INFO@ZEEFFPANELS.COM | WWW.ZEEFFPANELS.COM

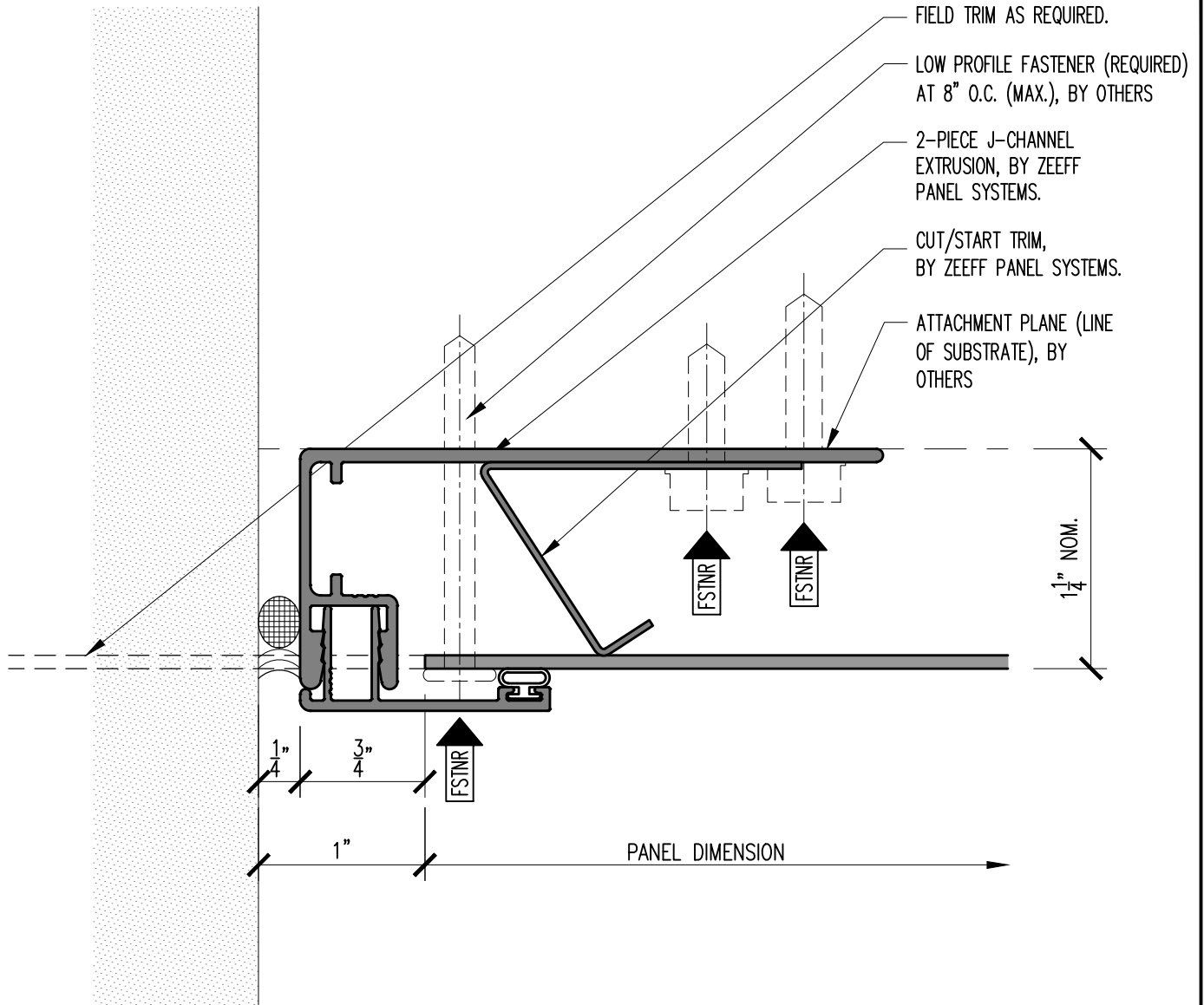
FULLY TESTED: AAMA 508 | ASTM E330 | ASTM E283 | ASTM E1233 | ASTM E331 | AAMA 505.1

D17

Date: 05/07/2024

ORIGIN SERIES DESIGN GUIDE

CUT-TO-FIT INSTALLATION



18

PANEL JAMB TERMINATION AT SOFFIT

SCALE: FULL

INFO@ZEEFFPANELS.COM | WWW.ZEEFFPANELS.COM

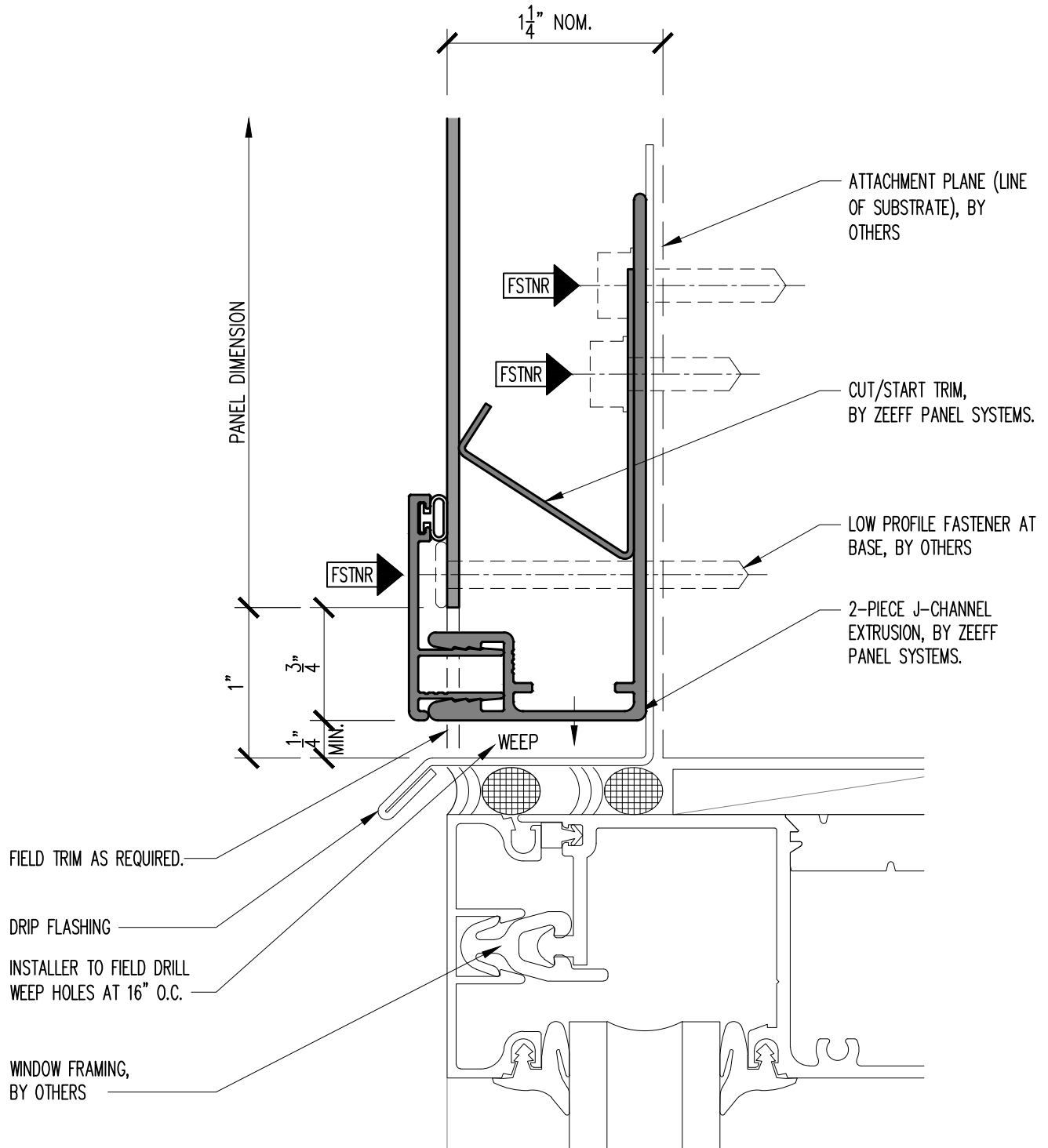
FULLY TESTED: AAMA 508 | ASTM E330 | ASTM E283 | ASTM E1233 | ASTM E331 | AAMA 505.1

Date: 05/07/2024

D18

ORIGIN SERIES DESIGN GUIDE

CUT-TO-FIT INSTALLATION



19

PANEL BASE DETAIL AT FLUSH WINDOW / DOOR HEAD

SCALE: FULL

INFO@ZEEFFPANELS.COM | WWW.ZEEFFPANELS.COM

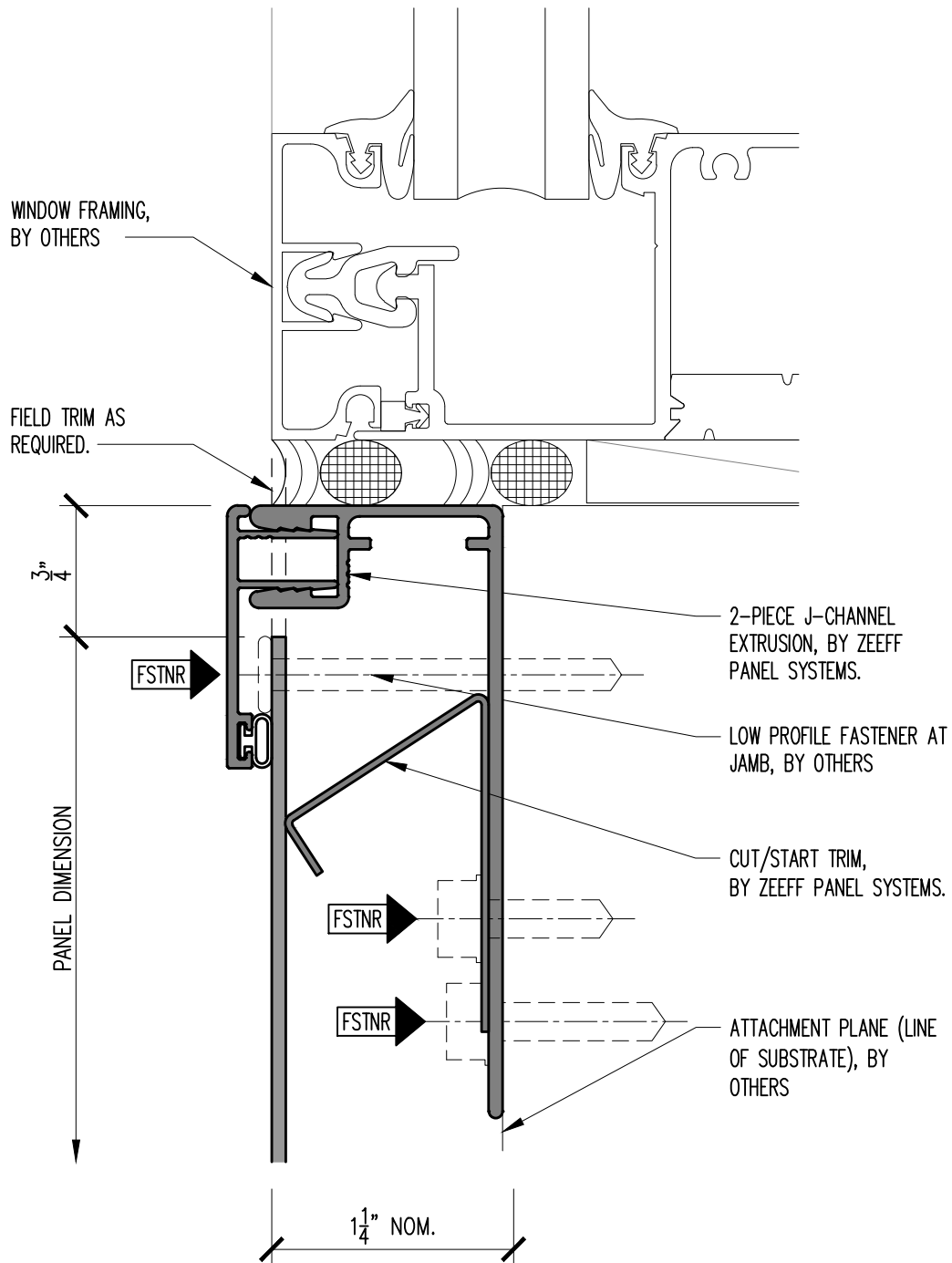
FULLY TESTED: AAMA 508 | ASTM E330 | ASTM E283 | ASTM E1233 | ASTM E331 | AAMA 505.1

D19

Date: 05/07/2024

ORIGIN SERIES DESIGN GUIDE

CUT-TO-FIT INSTALLATION



20

PANEL HEAD DETAIL AT FLUSH WINDOW SILL

SCALE: FULL

INFO@ZEEFFPANELS.COM | WWW.ZEEFFPANELS.COM

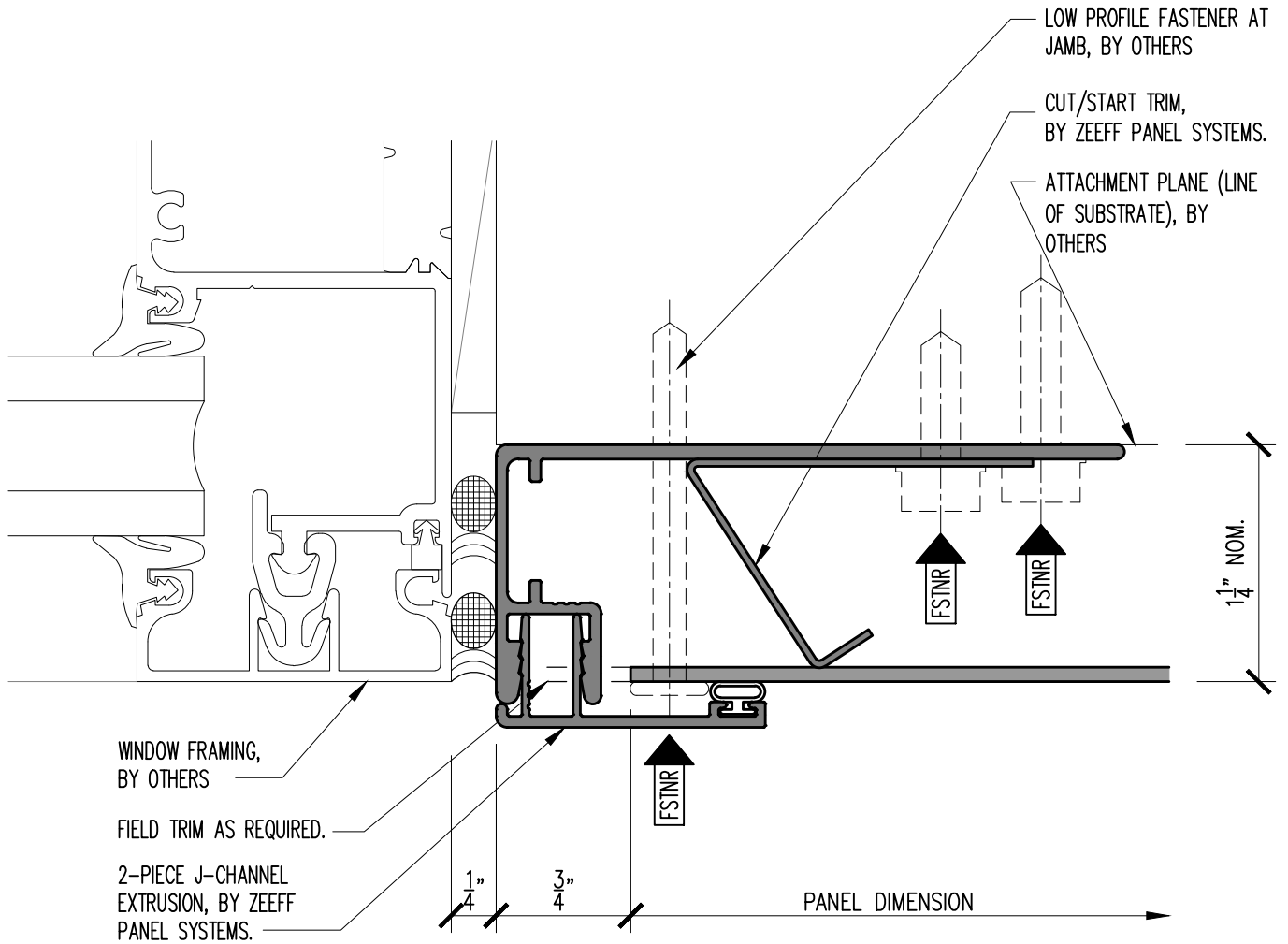
FULLY TESTED: AAMA 508 | ASTM E330 | ASTM E283 | ASTM E1233 | ASTM E331 | AAMA 505.1

D20

Date: 05/07/2024

ORIGIN SERIES DESIGN GUIDE

CUT-TO-FIT INSTALLATION



21

PANEL JAMB DETAIL AT FLUSH WINDOW / DOOR JAMB

SCALE: FULL

INFO@ZEEFFPANELS.COM | WWW.ZEEFFPANELS.COM

FULLY TESTED: AAMA 508 | ASTM E330 | ASTM E283 | ASTM E1233 | ASTM E331 | AAMA 505.1

D21

Date: 05/07/2024

ORIGIN SERIES DESIGN GUIDE

CUT-TO-FIT INSTALLATION

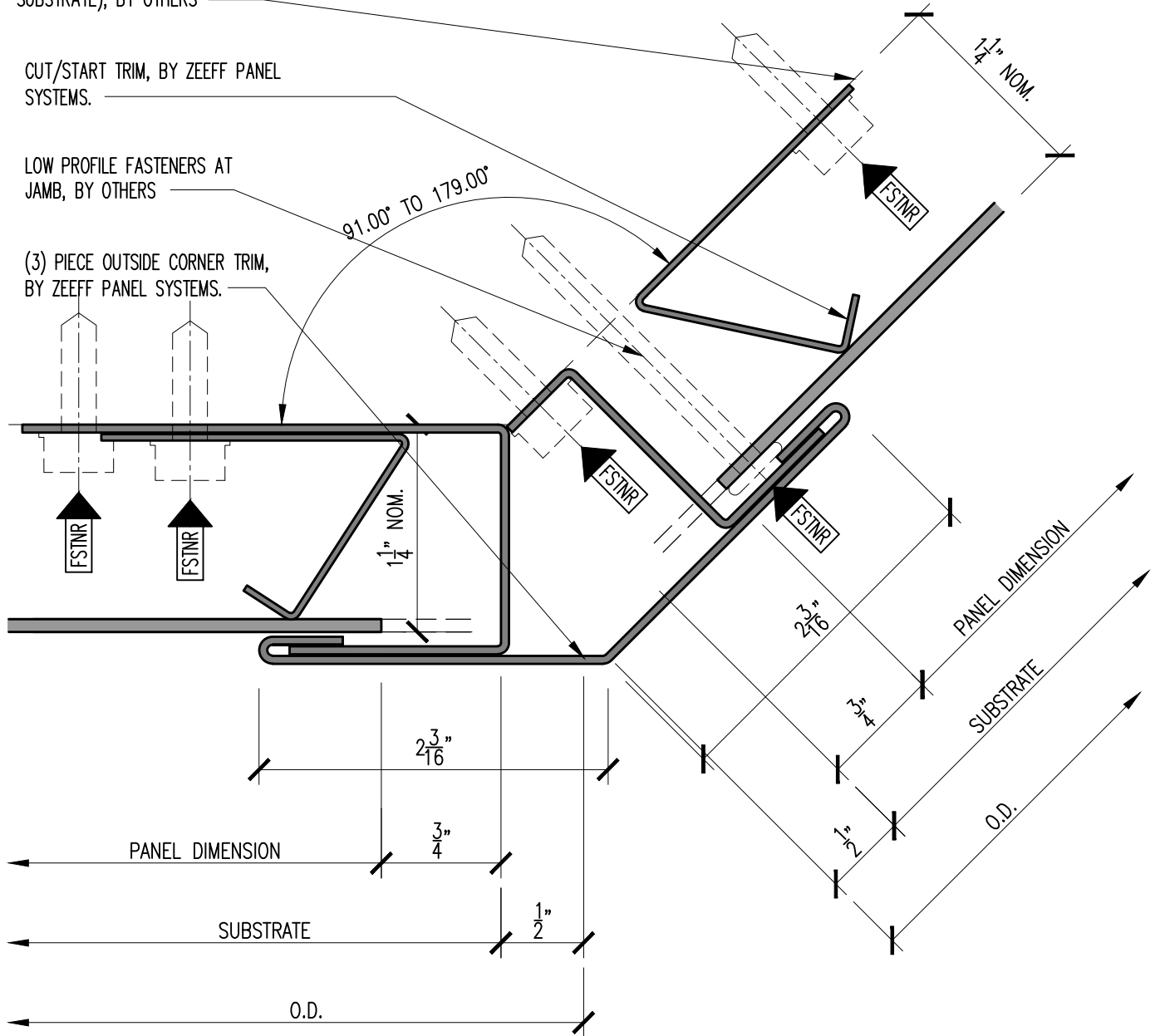


ATTACHMENT PLANE (LINE OF SUBSTRATE), BY OTHERS

CUT/START TRIM, BY ZEEFF PANEL SYSTEMS.

LOW PROFILE FASTENERS AT JAMB, BY OTHERS

(3) PIECE OUTSIDE CORNER TRIM, BY ZEEFF PANEL SYSTEMS.



22

NON-90° OUTSIDE CORNER DETAIL

SCALE: FULL

INFO@ZEEFFPANELS.COM | WWW.ZEEFFPANELS.COM

FULLY TESTED: AAMA 508 | ASTM E330 | ASTM E283 | ASTM E1233 | ASTM E331 | AAMA 505.1

Date: 05/07/2024

D22