

TECHNICAL PRODUCT GUIDE

PANELS THAT PERFORM.
PEOPLE THAT DELIVER.

ORIGIN PREMIER

PANEL PARAMETERS
TESTING INFORMATION
COLOR CHARTS



VISIT OUR WEBSITE:
ZEEFFPANELS.COM

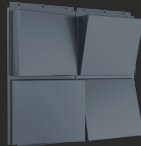
Manufactured to Perfection

Origin Premier

Origin Premier is a versatile single skin metal panel offering unmatched design flexibility and a wide range of finishes to suit any architectural vision.



Premier Flat
Customize size, material, thickness and finish



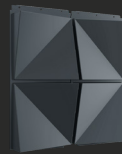
Premier Edge
Customize depth, size, material, thickness and finish



Premier Perforated
Customize imagery, perforation diameter, material, size, thickness, and finish



Premier Dimension
Customize depth, material, size, thickness and finish



Premier Butterfly
*Panel requirements can be complex
—Consult ZPS sales team for specific project request*

Premier vs. Select

One System. Multiple Solutions.

Robust detailing, field measurements and installation drawing sets

Ability to color match

Customize your panel size within our size parameters to meet your vision

PREMIER

Faster shop drawing and production lead times

Ability to custom color match

Wide variety of panel sizes to select from

SELECT

Value Engineered Solution

Origin Select

Origin Select retains the same quality and performance. The key to its affordability lies in the optimized process with select sizes, making this program an ideal choice for projects that demand both excellence and economic efficiency.

Origin Select
Standardized panel sizes, painted aluminum material, fixed at .080" thickness

Cut-to-fit application



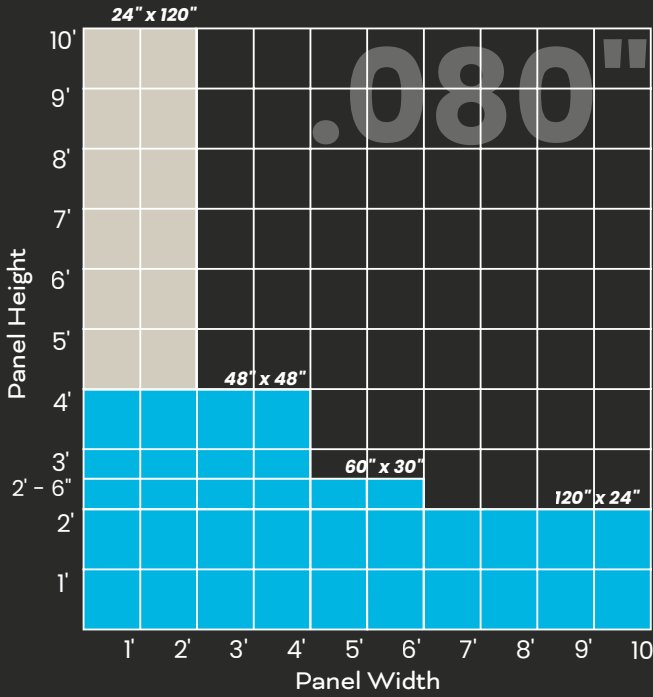
Premier vs. Select

Features	Premier	Select
Panel Sizes	Customizable	Standardized
Colors	Unlimited	Standard <small>*Color match as requested</small>
Formed Corners	✓	✗
Brake Metal Trims	✓	✗
Architectural Detailing	✓	✓
Cut-to-Fit Detailing	✓	✗
Field Measurement Drawings	✓	✗
Installation Drawing Set	✓	✓ <small>*Available if required</small>

PREMIER SERIES

.080" Post Painted Aluminum

Product Data Sheet



Vertical panels 48" and taller require Wind Clips at 24" on center max.

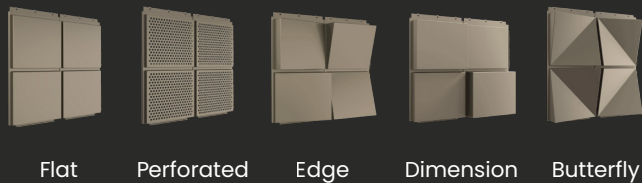
Wind clips not required (verification needed in high-wind areas).

Panel Size Parameters

Panel sizes as shown are the recommended maximum width and heights. If there is a panel size that fits inside these guidelines, ZPS can manufacture it. Please contact ZPS to discuss larger panel sizes.



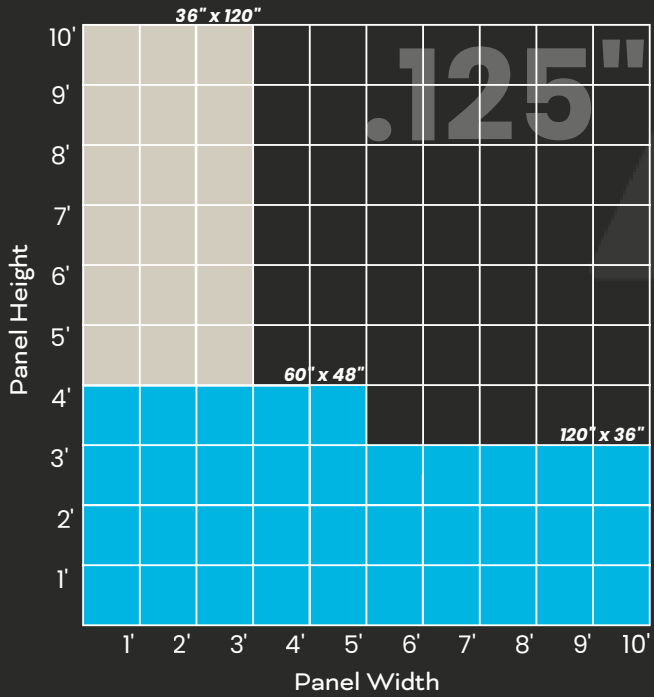
Available Panel Types



PREMIER SERIES

.125" Post Painted Aluminum

Product Data Sheet



Vertical panels 48" and taller require Wind Clips at 24" on center max.

Wind clips not required (verification needed in high-wind areas).



Available Panel Types



Technical Information		
Material	Post Painted Aluminum .080" (5052-H32)	<div>Fully Tested System</div> <div>✓</div> <div>AAMA 508 ASTM E330 ASTM E283 ASTM E1233 ASTM E331 AAMA 501.1 ASTM E84</div>
Panel Depth	1-1/4" nominal standard, up to 6"	
Material Weight	Less than 2 lbs. / sf	
Panel Joints	5/8" nominal (1/8" - 1" available)	
Material Finish	70% PVDF 100% FEVE, AAMA 2605	
Warranty	20 years for paint 2 years for manufacturing	

Technical Information		
Material	Post Painted Aluminum .125" (5052-H32)	<div>Fully Tested System</div> <div>✓</div> <div>AAMA 508 ASTM E330 ASTM E283 ASTM E1233 ASTM E331 AAMA 501.1 ASTM E84</div>
Panel Depth	1-1/2" nominal standard, up to 10"	
Material Weight	Less than 3 lbs. / sf	
Panel Joints	5/8" nominal (1/8" - 1" available)	
Material Finish	70% PVDF 100% FEVE, AAMA 2605	
Warranty	20 years for paint 2 years for manufacturing	

Standard Color Chart:



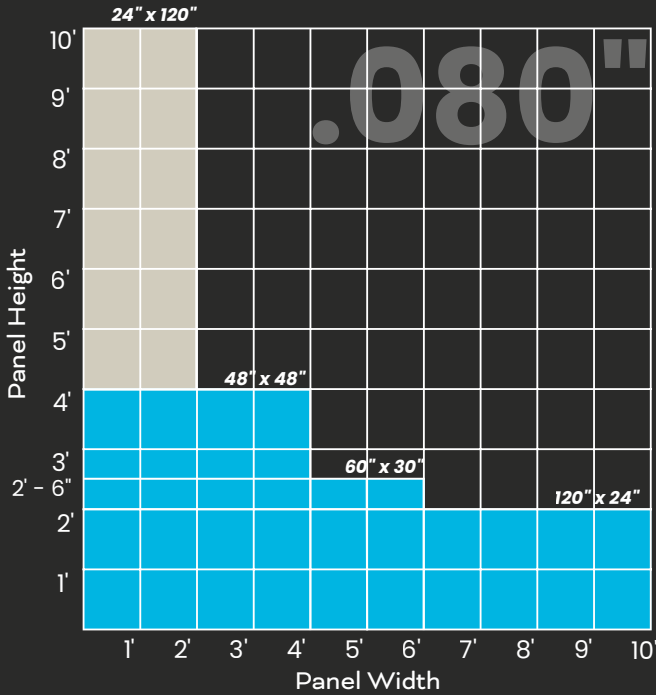
PREMIER SERIES

.080" Post Anodized Aluminum

Product Data Sheet

Panel Size Parameters

Panel sizes as shown are the recommended maximum width and heights. If there is a panel size that fits inside these guidelines, ZPS can manufacture it. Please contact ZPS to discuss larger panel sizes.



Vertical panels 48" and taller require Wind Clips at 24" on center max.

Wind clips not required (verification needed in high-wind areas).



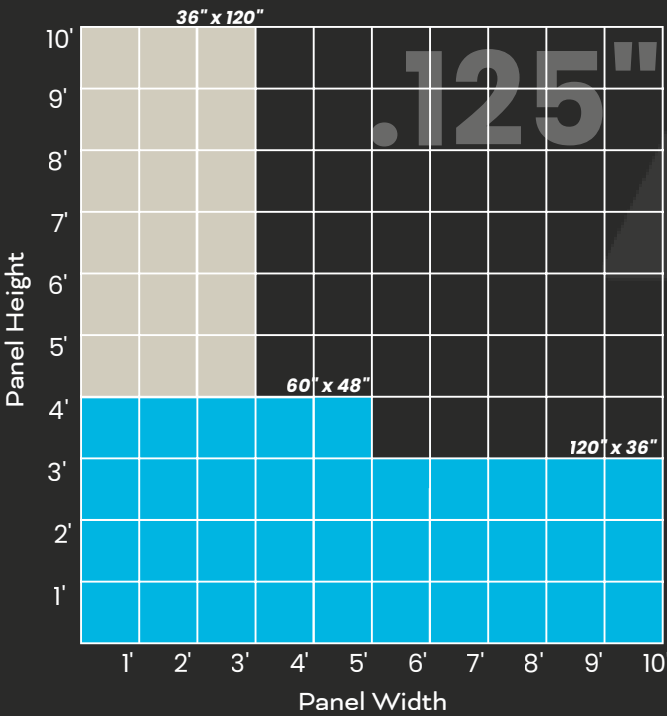
Available Panel Types



PREMIER SERIES

.125" Post Anodized Aluminum

Product Data Sheet

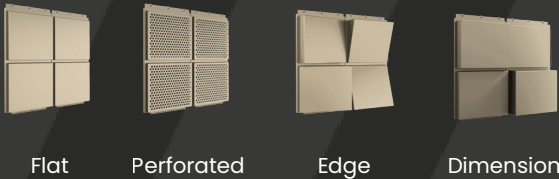


Vertical panels 48" and taller require Wind Clips at 24" on center max.

Wind clips not required (verification needed in high-wind areas).



Available Panel Types



Technical Information		
Material	Post Anodized Aluminum .080" (5005-AQ)	Fully Tested System AAMA 508 ASTM E330 ASTM E283 ASTM E1233 ASTM E331 AAMA 501.1 ASTM E84
Panel Depth	1-1/4" nominal standard, up to 6"	
Material Weight	Less than 2 lbs. / sf	
Panel Joints	5/8" nominal (1/8" - 1" available)	
Material Finish	AAMA 611 Architectural Class 1	
Warranty	5 - 10 years for anodized 2 years for manufacturing	

Technical Information		
Material	Post Anodized Aluminum .125" (5005-AQ)	Fully Tested System AAMA 508 ASTM E330 ASTM E283 ASTM E1233 ASTM E331 AAMA 501.1 ASTM E84
Panel Depth	1-1/2" nominal standard, up to 8"	
Material Weight	Less than 3 lbs. / sf	
Panel Joints	5/8" nominal (1/8" - 1" available)	
Material Finish	AAMA 611 Architectural Class 1	
Warranty	5 - 10 years for anodized 2 years for manufacturing	

Anodized Standard Color Chart:



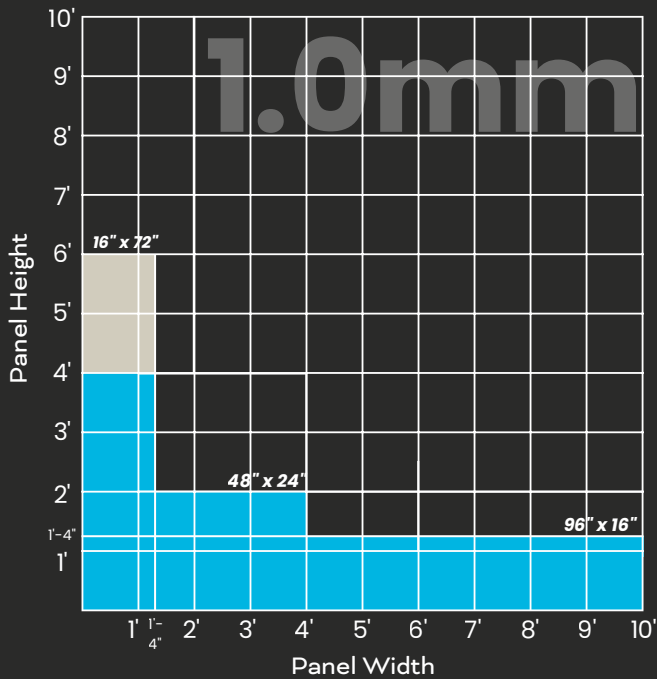
PREMIER SERIES

1.0mm NedZink

Product Data Sheet

Panel Size Parameters

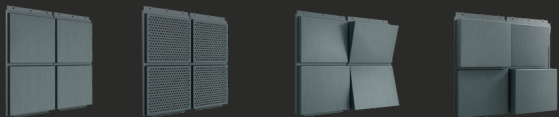
Panel sizes as shown are the recommended maximum width and heights. If there is a panel size that fits inside these guidelines, ZPS can manufacture it. Please contact ZPS to discuss larger panel sizes.



- Vertical panels 48" and taller require Wind Clips at 24" on center max.
- Wind clips not required (verification needed in high-wind areas).



Available Panel Types



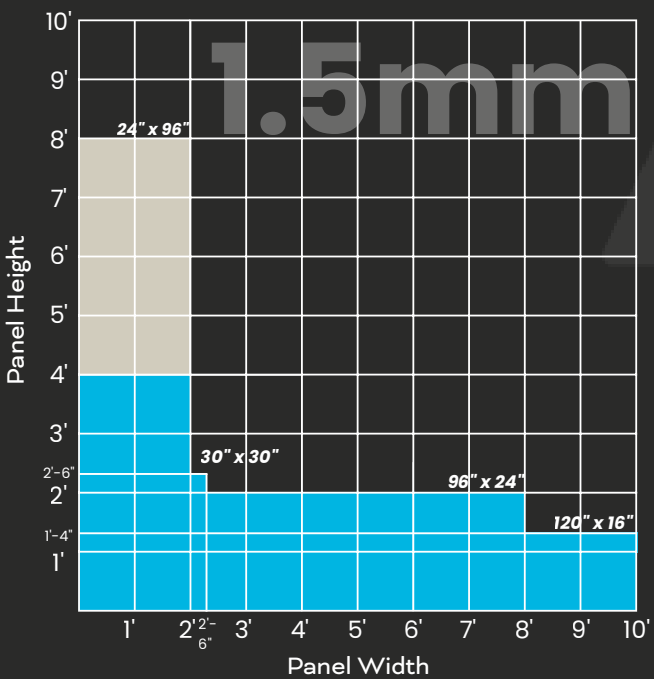
Flat Perforated Edge Dimension

Technical Information		
Material	1.0mm Zinc	<div>Fully Tested System</div> <div>✓</div> <div>AAMA 508 ASTM E330 ASTM E283 ASTM E1233 ASTM E331 AAMA 501.1</div>
Panel Depth	1-1/4" nominal standard, up to 3"	
Material Weight	≈ 2 lbs. / sf	
Panel Joints	5/8" nominal (1/8" - 1" available)	
Material Finish	Naturel Neo Noir Nuance	
Warranty	NedZink Material, 10 years 2 years for manufacturing	

PREMIER SERIES

1.5mm NedZink

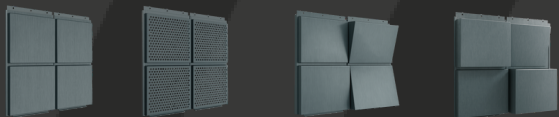
Product Data Sheet



- Vertical panels 48" and taller require Wind Clips at 24" on center max.
- Wind clips not required (verification needed in high-wind areas).



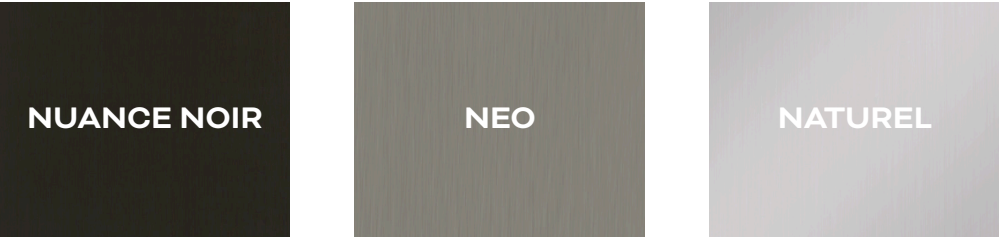
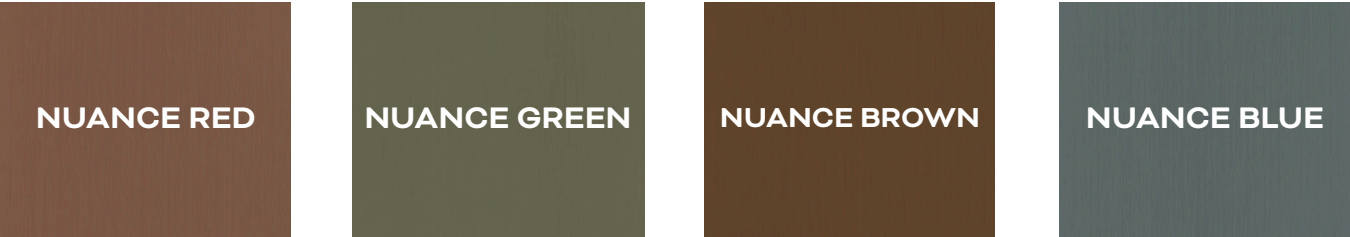
Available Panel Types



Flat Perforated Edge Dimension

Technical Information		
Material	1.5mm Zinc	<div>Fully Tested System</div> <div>✓</div> <div>AAMA 508 ASTM E330 ASTM E283 ASTM E1233 ASTM E331 AAMA 501.1</div>
Panel Depth	1-1/4" nominal standard, up to 3"	
Material Weight	≈ 3 lbs. / sf	
Panel Joints	5/8" nominal (1/8" - 1" available)	
Material Finish	Naturel Neo Noir Nuance	
Warranty	NedZink Material, 10 years 2 years for manufacturing	

NedZink Standard Colors:



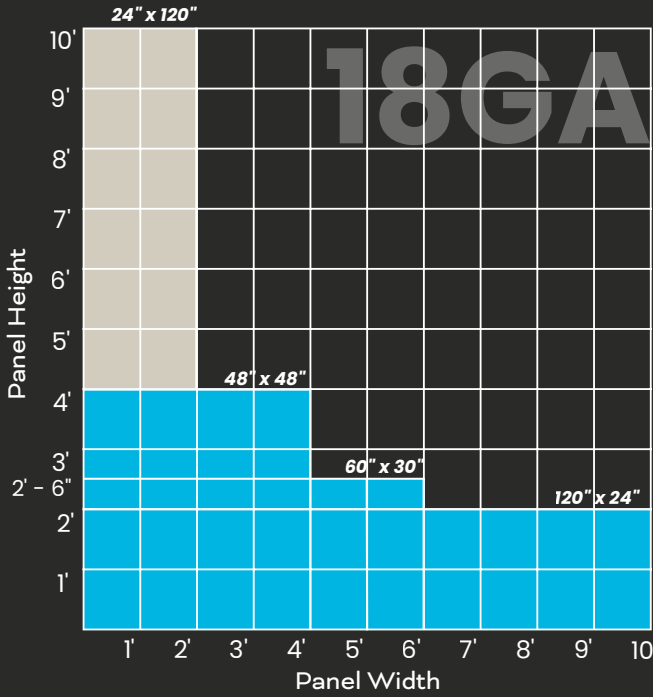
PREMIER SERIES

18GA Weathering Steel

Product Data Sheet

Panel Size Parameters

Panel sizes as shown are the recommended maximum width and heights. If there is a panel size that fits inside these guidelines, ZPS can manufacture it. Please contact ZPS to discuss larger panel sizes.



Vertical panels 48" and taller require Wind Clips at 24" on center max.

Wind clips not required (verification needed in high-wind areas).



Available Panel Types



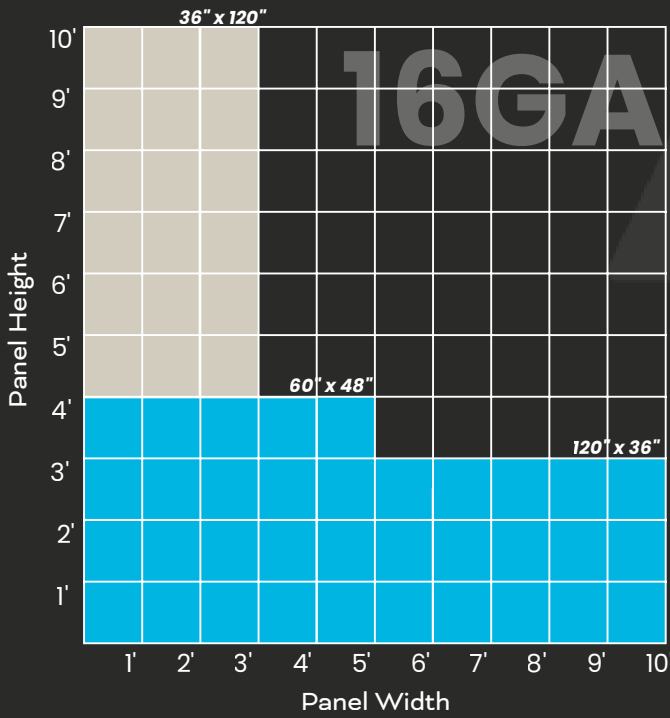
Flat Perforated Edge Dimension

Technical Information		
Material	18 GA, A606-4 Weathering Steel	<div>Fully Tested System</div> <div>✓</div> <div>AAMA 508 ASTM E330 ASTM E283 ASTM E1233 ASTM E331 AAMA 501.1 ASTM E84</div>
Panel Depth	1-1/4" nominal standard, up to 3"	
Material Weight	≈ 3 lbs. / sf	
Panel Joints	5/8" nominal (1/8" - 1" available)	
Material Finish	Mill Steel - Naturally Weathering	
Warranty	2 years for manufacturing	

PREMIER SERIES

16GA Weathering Steel

Product Data Sheet



Vertical panels 48" and taller require Wind Clips at 24" on center max.

Wind clips not required (verification needed in high-wind areas).



Available Panel Types



Flat Perforated Edge Dimension

Technical Information		
Material	16 GA, A606-4 Weathering Steel	<div>Fully Tested System</div> <div>✓</div> <div>AAMA 508 ASTM E330 ASTM E283 ASTM E1233 ASTM E331 AAMA 501.1 ASTM E84</div>
Panel Depth	1-1/4" nominal standard, up to 3"	
Material Weight	≈ 3 lbs. / sf	
Panel Joints	5/8" nominal (1/8" - 1" available)	
Material Finish	Mill Steel - Naturally Weathering	
Warranty	2 years for manufacturing	

Examples of the natural patina formation process of A606-4 weathering steel (Weather/climate dependent)



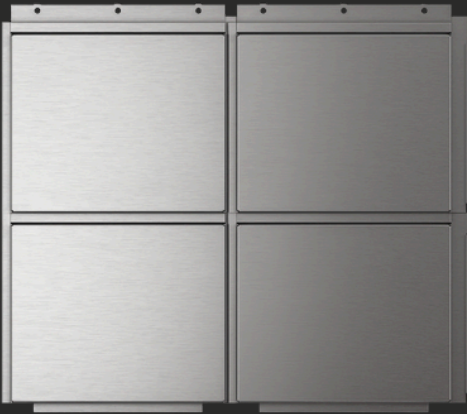
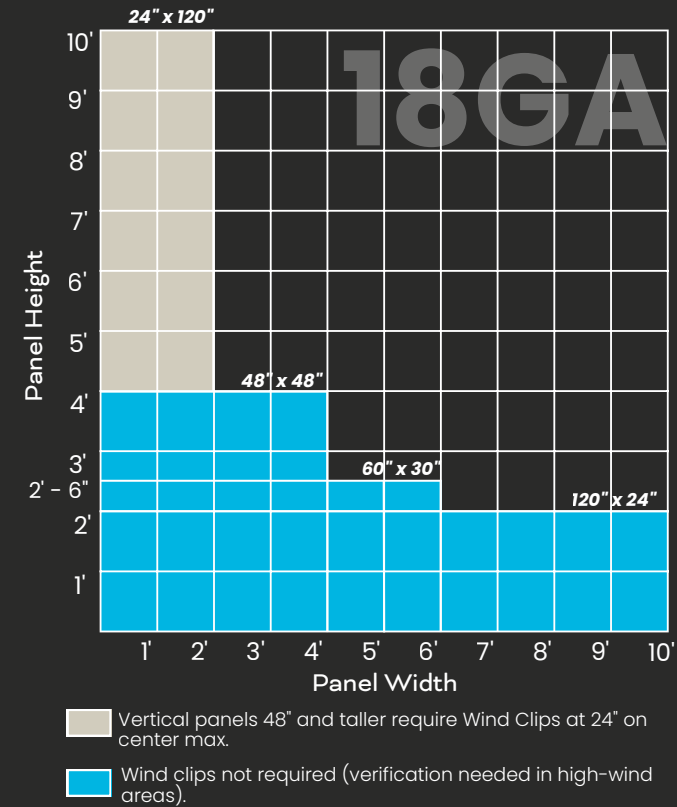
PREMIER SERIES

18GA Stainless Steel

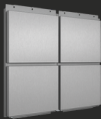
Product Data Sheet

Panel Size Parameters

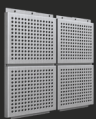
Panel sizes as shown are the recommended maximum width and heights. If there is a panel size that fits inside these guidelines, ZPS can manufacture it. Please contact ZPS to discuss larger panel sizes.



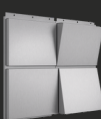
Available Panel Types



Flat



Perforated



Edge



Dimension



Technical Information

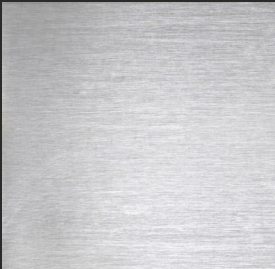
Material	18 GA, 316 Stainless Steel	Fully Tested System AAMA 508 ASTM E330 ASTM E283 ASTM E1233 ASTM E331 AAMA 501.1 ASTM E84
Panel Depth	1-1/4" nominal standard, up to 3"	
Material Weight	≈ 3 lbs. / sf	
Panel Joints	5/8" nominal (1/8" - 1" available)	
Material Finish	Polished, Brushed, Angel Hair, 2B	
Warranty	2 years for manufacturing	

Finish Options

Polished



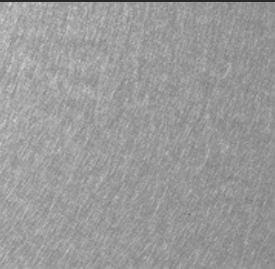
Brushed



Angel Hair



2B



*Interior application only



VISIT OUR WEBSITE

www.zeeffpanels.com

616-341-7227
info@zeeffpanels.com

138 W Washington Ave.
Zeeland, MI
49424

