



# LINEAR Series

Clip-free installation, deeper reveals, custom widths, and limitless finish combinations—Linear does what other plank systems can't.

## System Features



### ClickLock Technology

No more clips. Our patent pending ClickLock technology features an integrated clip system.



### Customization

Mix widths, add depth, all within our new size offerings. Plus, we can color match any woodgrain or solid color.



### Strength Meets Versatility

Crafted from marine-grade 5052 aluminum, Linear offers superior strength and corrosion resistance.

2x

### Faster Installation

The planks one piece design is optimized to install easily onto a variety of substrates.



### Deeper Reveals

Linear allows for bold, deeper reveals that create striking visual depth and dimension. Designed for architects who want more impact, it transforms standard façades into standout statements.



### Higher Performance

Our system is engineered to outperform conventional plank products, delivering superior structural integrity and higher wind load resistance in even the most demanding environments.

LINEAR



### VISIT OUR WEBSITE

[www.zeeffpanels.com](http://www.zeeffpanels.com)

616-341-7227

[info@zeeffpanels.com](mailto:info@zeeffpanels.com)

138 W Washington Ave.  
Zeeland, MI  
49424

LINEAR Series

Design something different





# Design without limits

## More sizes, more freedom

Linear gives architects and builders the freedom to create. Choose from multiple plank widths, or specify custom sizes to suit your project.

Mix widths. Combine finishes. Add depth with Edge or Dimension profiles—or experiment with two-color or mixed-width designs for a truly distinctive look.

Available in 6", 7", 8", 10", and 12" widths—or *custom sizes* up to 120" in length

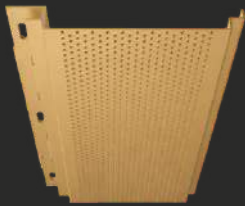


### Strength in every seam

Splice plates are manufactured in durable .063" aluminum and available in both light and dark finish options .

### Make it perforated

Transform Linear planks with architectural perforations that elevate both form and function. Choose from standard or fully custom patterns to control light, airflow, and visual texture.



## Reveals become a design feature

### Define

Enhance visual rhythm and strengthens the façade's three-dimensional expression.

### Colorize

Custom-colored reveals for branding, team identity, or wayfinding.

### Illuminate

Illuminated reveals to transform an elevation after dark.

## Made with precision

Our plank series is fully fabricated in-house for precise, project-specific dimensions—never extruded. This approach delivers tighter tolerances, deeper reveals, and greater design flexibility without the limitations of fixed dies.

**No Clips? No problem.** Efficiency built in with our patent pending ClickLock technology that introduces an integrated clip design.

**Pre-Painted Edges Arrive Ready to Install—**  
*No Cutting, No Touch-Ups, Total Consistency.*

## Technical Information

LINEAR	Material Thickness	Finish	Panel Depth	Reveals	Warranty	
	.063" Aluminum	Powder Coated	1" Standard – Up to 3"	1/2" Horizontal	10-20 years, 1 year manufacturing	

## Standard Woodgrain Finishes

Each plank is post-finished for precision color and durability, ensuring every installation delivers the quality ZPS is known for.



LEMON BAMBOO



NATURAL OAK



NATURAL MAPLE



WEATHERED REDWOOD



AMERICAN REDWOOD



BURNT REDWOOD



GOLDEN OAK



LIGHT TOASTED FIR



LIGHT TOASTED PINE



BURNT BAMBOO



WEATHERED OAK



BURNT WALNUT



DARK NATIONAL WALNUT



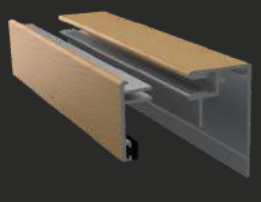
SANDY BAMBOO

Zeeff Panel Systems **can CUSTOM match to any 'woodgrain' & 'solid' color.**

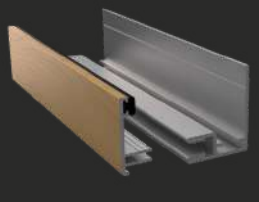
## Extrusion Profiles



Outside Corner Profile



Head/Base Extrusion Profile



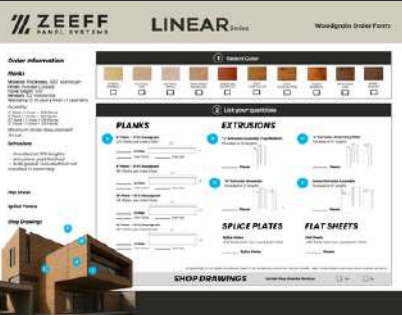
Jamb Extrusion Profile



"H" Extrusion Profiles

## Know your quantity? Order it.

We've got you covered—visit our website, complete the form, and our team will follow up with a quote. **Full take-off services are available to support your project.**



## Plank Features Comparison List

Features	Industry Standard	Zeeff Panel Systems LINEAR SERIES	RESULT
Recommended Material & Installation Crew Size	2-3 People	1-2 People	Up to 2x Faster installation, 50% cost savings
Wind Load Performance at Standard 32" Fastener Spacing	50 PSF	100 PSF	Rigid durability ; 50% less fasteners at standard performance level – faster install
Cuts Required on Both Ends for Every Plank	YES; MIN 1/2"	NOT REQUIRED	Less waste, faster install, cleaner edges, more square
Touch-Up Paint on Butt Joint Ends Required	YES	NOT REQUIRED	Cleaner edges