

LINEAR ^{Series}

Design something different

ZEEFF
PANEL SYSTEMS



Clip-free installation, deeper reveals, custom widths, and limitless finish combinations—Linear does what other plank systems can't.

System Features



ClickLock Technology

No more clips. Our patent pending ClickLock technology features an integrated clip system.



Customization

Mix widths, add depth, all within our new size offerings. Plus, we can color match any woodgrain or solid color.



Strength Meets Versatility

Crafted from marine-grade 5052 aluminum, Linear offers superior strength and corrosion resistance.

2x

Faster Installation

The plank's one piece design is optimized to install easily onto a variety of substrates.



Deeper Reveals

Linear allows for bold, deeper reveals that create striking visual depth and dimension. Designed for architects who want more impact, it transforms standard façades into standout statements.



Higher Performance

Our system is engineered to outperform conventional plank products, delivering superior structural integrity and higher wind load resistance in even the most demanding environments.

LINEAR

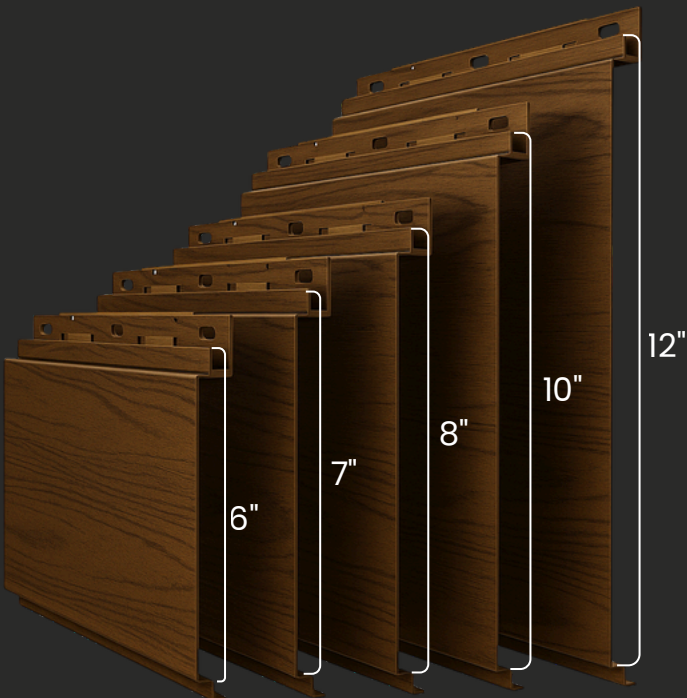
Design without limits

More sizes, more freedom

Linear gives architects and builders the freedom to create. Choose from multiple plank widths, or specify custom sizes to suit your project.

Mix widths. Combine finishes. Add depth with Edge or Dimension profiles—or experiment with two-color or mixed-width designs for a truly distinctive look.

Available in 6", 7", 8", 10", and 12" widths—or *custom sizes* up to 120" in length



No Clips? No problem.
Efficiency built in with our patent pending ClickLock technology that introduces an integrated wind-clip design.

Made with precision

Our plank series is fully fabricated in-house for precise, project-specific dimensions—never extruded. This approach delivers tighter tolerances, deeper reveals, and greater design flexibility without the limitations of fixed dies.

***Pre-Painted Edges Arrive Ready to Install—
No Cutting, No Touch-Ups, Total Consistency.***

Technical Information

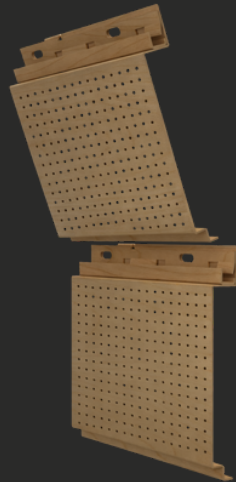
LINEAR	Material Thickness	Finish	Panel Depth	Reveals	Warranty
	.063" Aluminum	Powder Coated	1" Standard - Up to 3"	1/2" Horizontal	10-20 years, 1 year manufacturing

Strength in every seam

Splice plates are manufactured in durable .063" aluminum and available in both light and dark finish options to complement any design palette. Plates are packaged in convenient quantities of 30 for streamlined ordering and installation.

Make it perforated

Transform Linear planks with architectural perforations that elevate both form and function. Choose from standard or fully custom patterns to control light, airflow, and visual texture. Our in-house precision tooling ensures every perforated panel delivers a clean, consistent aesthetic.



Deeper reveals that demand attention.

By increasing the reveal depth, our system enhances visual rhythm and strengthens the façade's three-dimensional expression.

The result is a more intentional, high-impact look that remains consistent across every panel.

Standard Woodgrain Finishes

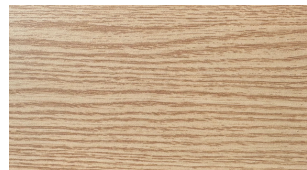
Each plank is post-finished for precision color and durability, ensuring every installation delivers the quality ZPS is known for.



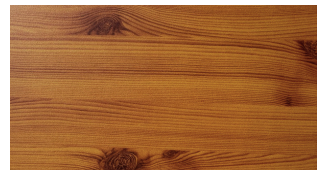
LEMON BAMBOO



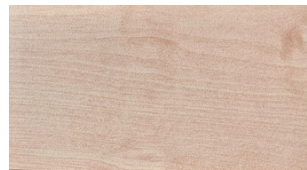
LIGHT TOASTED FIR



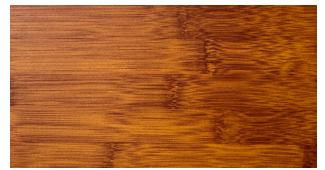
NATURAL OAK



LIGHT TOASTED PINE



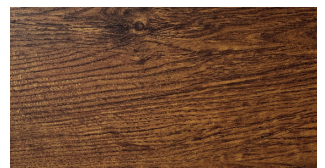
NATURAL MAPLE



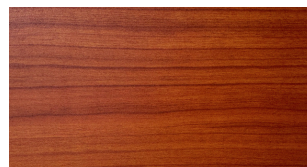
BURNT BAMBOO



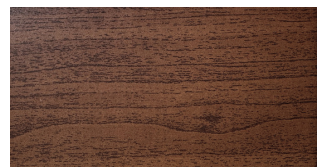
WEATHERED REDWOOD



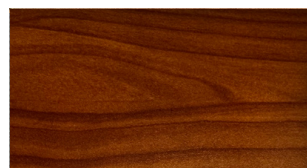
WEATHERD OAK



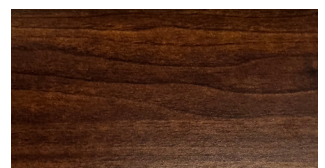
AMERICAN REDWOOD



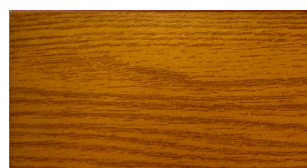
BURNT OAK



BURNT REDWOOD



DARK NATIONAL WALNUT



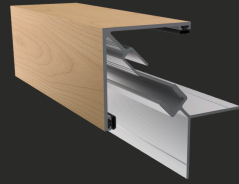
GOLDEN OAK



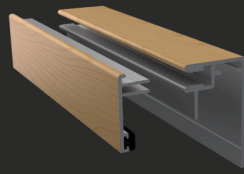
SANDY BAMBOO

Zeeff Panel Systems **can CUSTOM match to any**
'woodgrain' & 'solid' color.

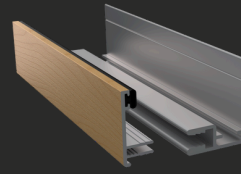
Extrusion Profiles



Outside
Corner
Profile



Head/Base
Extrusion
Profile



Jamb
Extrusion
Profile

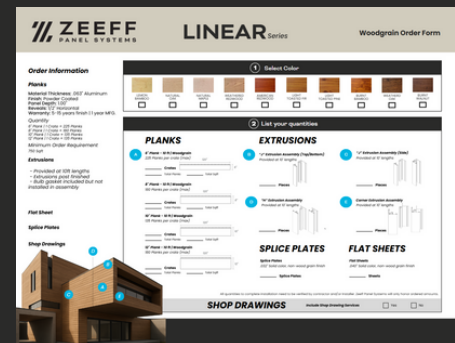


"H"
Extrusion
Profiles



Know your quantity? Order it.

We've got you covered—visit our website, complete the form, and our team will follow up with a quote. Full take-off services are available to support your project.



Plank Features Comparison List

Features	Industry Standard	Zeeff Panel Systems LINEAR SERIES	RESULT
Recommended Material & Installation Crew Size	2-3 People	1-2 People	Up to 2x Faster installation, 50% cost savings
Wind Load Performance at Standard 32" Fastener Spacing	50 PSF	100 PSF	Rigid durability ; 50% less fasteners at standard performance level - faster install
Cuts Required on Both Ends for Every Plank	YES; MIN 1/2"	NOT REQUIRED	Less waste, faster install, cleaner edges, more square
Touch-Up Paint on Butt Joint Ends Required	YES	NOT REQUIRED	Cleaner edges



VISIT OUR WEBSITE

www.zeeffpanels.com

616-341-7227
info@zeeffpanels.com

138 W Washington Ave.
Zeeland, MI
49424