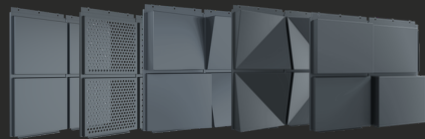


ORIGIN  
**Premier**

*Manufactured to Perfection*

Origin Premier is a versatile single skin metal panel offering unmatched design flexibility and a wide range of finishes to suit any architectural vision.

**Panel Types**



ORIGIN  
**Select & Lite**

*Value Engineered Solution*

Origin Select & Lite delivers the same trusted quality and performance in optimized standard sizes, creating a cost-efficient solution without compromising design.

*Cut-to-fit application*



**Premier vs. Select**

One System.  
Multiple Solutions.

Robust detailing, field measurements and installation drawing sets

Ability to color match

Customize your panel size within our size parameters to meet your vision

**PREMIER**

Faster shop drawing and production lead times

Ability to custom color match

Wide variety of panel sizes to select from

**SELECT**

**Premier vs. Select**

Features	Premier	Select & Lite
Panel Sizes	Customizable	Standardized
Colors	Unlimited	Standard <small>*Color match as requested</small>
Formed Corners	✓	✗
Brake Metal Trims	✓	✗
Architectural Detailing	✓	✗
Cut-to-Fit Detailing	✓	✓
Field Measurement Drawings	✓	✗
Installation Drawing Set	✓	✓ <small>*Available if required</small>



**VISIT OUR WEBSITE**

[www.zeeffpanels.com](http://www.zeeffpanels.com)

616-341-7227  
info@zeeffpanels.com

138 W Washington Ave.  
Zeeland, MI  
49424



**QUICK PRODUCT GUIDE**

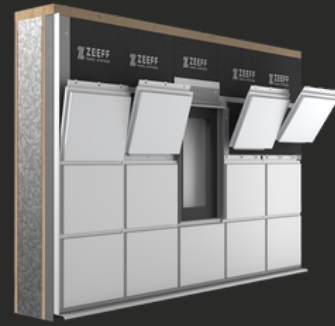
ORIGIN  
**PREMIER, SELECT & LITE**

PANELS THAT PERFORM.  
PEOPLE THAT DELIVER.

PANEL PARAMETERS  
TECHNICAL  
INFORMATION

VISIT OUR WEBSITE:  
[ZEEFFPANELS.COM](http://ZEEFFPANELS.COM)

# Origin Premier



**Fully Tested System**

AAMA 508	ASTM E1233
ASTM E330	ASTM E331
ASTM E283	AAMA 501.1
	ASTM E84

## Panel Parameters:

**Material:**  
 Post Painted Aluminum .080" (5052-H32)  
 Post Anodized Aluminum .080" (5000 Series)  
 Stainless Steel 18GA (316)  
 Weathering Steel 18GA (A606)

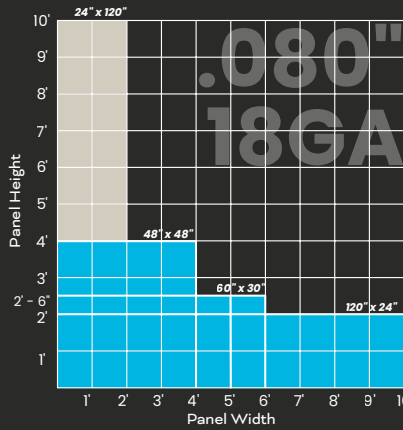
**Products:** Flat, Dimension, Edge, Perforated

**Max Depth:** 6" Depth (Aluminum), 3" Depth (Steel)

**Material:**  
 Post Painted Aluminum .125" (5052-H32)  
 Post Anodized Aluminum .125" (5000 Series)  
 Stainless Steel 16GA (316)  
 Weathering Steel 16GA (A606)

**Products:** Flat, Dimension, Edge, Perforated

**Max Depth:** 10" Depth (Aluminum), 3" Depth (Steel)



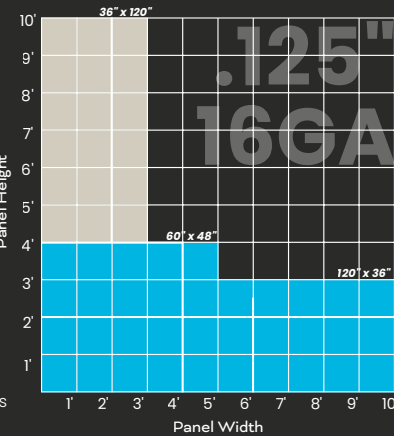
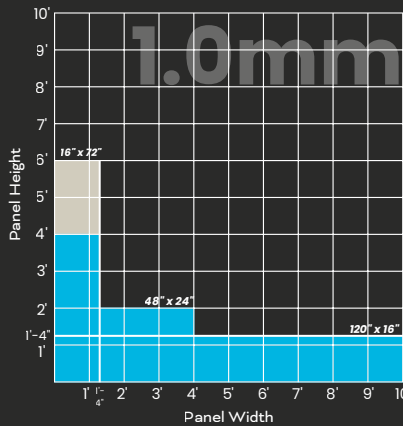
Vertical panels 48" and taller require Wind Clips at 24" on center Max

Wind clips not required (verification needed in high-wind areas) Panels can be fabricated to any size within colored zones.

**Material:**  
 Zinc 1.0mm

**Products:** Flat, Dimension, Edge, Perforated

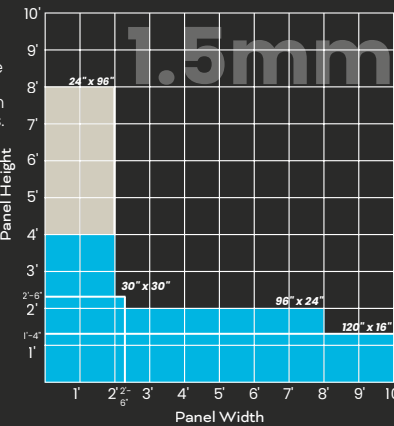
**Max Depth:** 3" Depth



**Material:**  
 Zinc 1.5mm

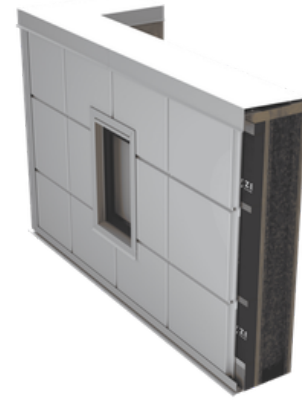
**Products:** Flat, Dimension, Edge, Perforated

**Max Depth:** 3" Depth



# Origin Select

+Value Engineered



## Technical Data

Material Thickness: .080" Aluminum  
 System Depth: 1-1/4" nominal  
 Material Weight: Less than 2 lbs. / sf  
 Panel Reveals: 5/8" nominal  
 Material Finish: 70% PVDF | 100% FEVE

**Fully Tested System**

AAMA 508	ASTM E1233
ASTM E330	ASTM E331
ASTM E283	AAMA 501.1
	ASTM E84

## Available Program Sizes:

Width x Height	Width x Height	Width x Height	Width x Height	Width x Height
18" x 48" Width x Height	22" x 48" Width x Height	24" x 96" Width x Height	60" x 22" Width x Height	96" x 16" Width x Height
18" x 72" Width x Height	22" x 60" Width x Height	24" x 120" Width x Height	60" x 24" Width x Height	96" x 20" Width x Height
18" x 96" Width x Height	22" x 72" Width x Height	30" x 30" Width x Height	60" x 30" Width x Height	96" x 22" Width x Height
18" x 120" Width x Height	22" x 96" Width x Height	30" x 60" Width x Height	72" x 16" Width x Height	96" x 24" Width x Height
20" x 60" Width x Height	22" x 120" Width x Height	36" x 36" Width x Height	72" x 18" Width x Height	120" x 16" Width x Height
20" x 72" Width x Height	24" x 48" Width x Height	48" x 22" Width x Height	72" x 20" Width x Height	120" x 20" Width x Height
20" x 96" Width x Height	24" x 60" Width x Height	48" x 24" Width x Height	72" x 22" Width x Height	120" x 22" Width x Height
20" x 120" Width x Height	24" x 72" Width x Height	60" x 20" Width x Height	72" x 24" Width x Height	120" x 24" Width x Height

# Origin Select Lite



## Technical Data

Material Thickness: .063", .050" Aluminum  
 System Depth: 1-1/4" nominal  
 Material Weight: Less than 2 lbs. / sf  
 Panel Reveals: 5/8" nominal  
 Material Finish: High Performance Powder Coating (AAMA 2605/2604)

**D2000 Series**  
 25-year film integrity  
 15-year decorative integrity  
 Qualicoat Class 2 / AAMA 2604

**D3000 Series**  
 30-year film integrity  
 20-year decorative integrity  
 Qualicoat Class 3 / AAMA 2605

**Fully Tested System**

AAMA 508	ASTM E1233
ASTM E330	ASTM E331
ASTM E283	AAMA 501.1
	ASTM E84

## Available Program Sizes:

.063" Aluminum Width x Height	.063" & .050" Aluminum Width x Height
36" x 18" Width x Height	36" x 16" Width x Height
48" x 18" Width x Height	48" x 16" Width x Height
60" x 18" Width x Height	60" x 16" Width x Height
72" x 18" Width x Height	72" x 16" Width x Height
96" x 18" Width x Height	96" x 16" Width x Height
120" x 18" Width x Height	120" x 16" Width x Height