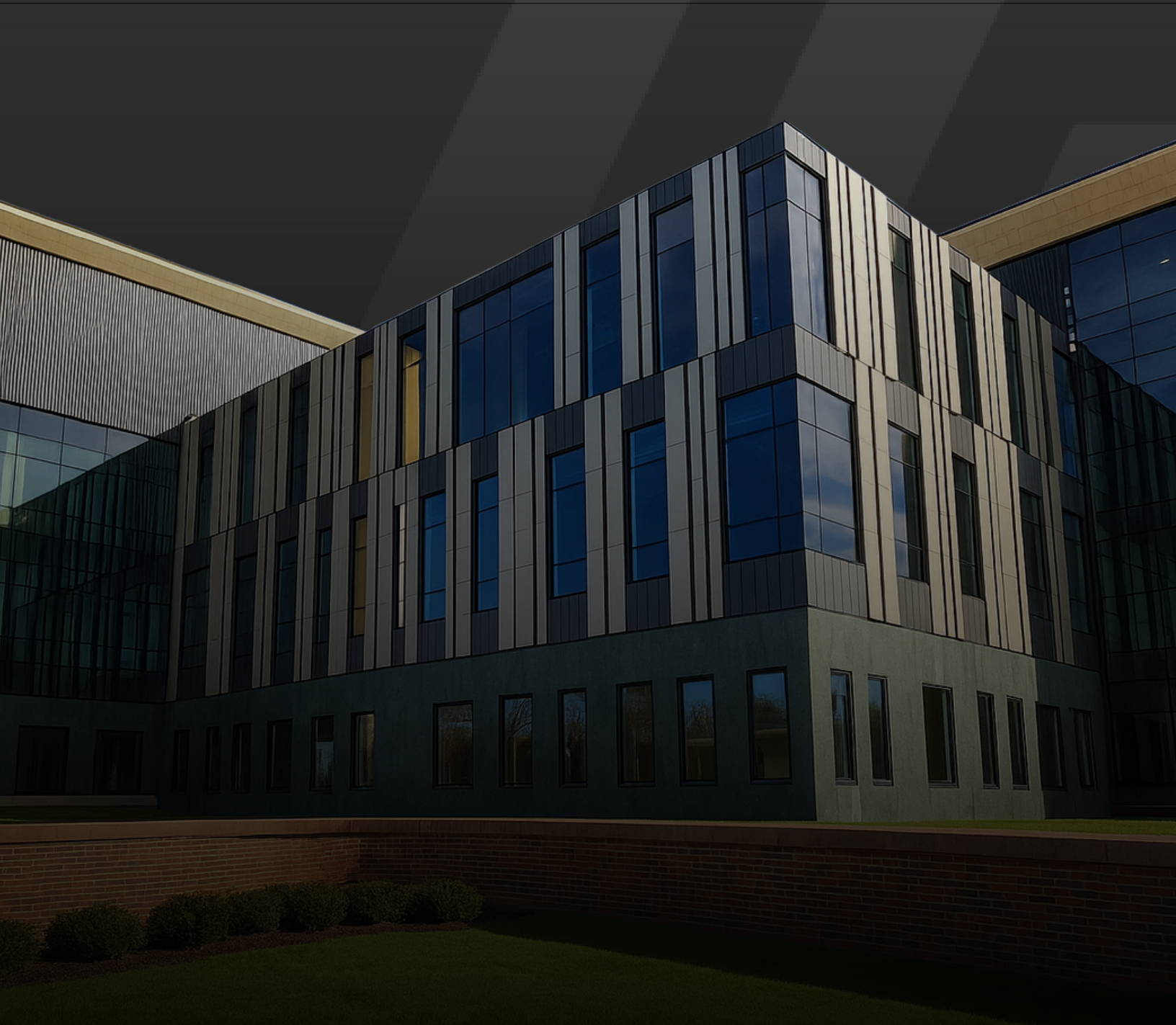


PRODUCT BROCHURE

/// ZEEFF
PANEL SYSTEMS

zeffpanels.com



ZEEFF PANEL SYSTEMS

Our legacy spans decades, earning us a reputation as industry pioneers

We firmly believe that quality and affordability should not be mutually exclusive. By leveraging our extensive knowledge and ingenuity, we have crafted a range of uncompromisingly durable, aesthetic, and efficient metal panels at the most competitive prices. We strive to make exceptional metal panel systems accessible to a wider audience without compromising quality.

ORIGIN *System Features*



Non Combustible

Panels are made from a single skin of metal. Therefore, they are non combustible and do not contribute to flame spread.



Not Laminated

The panel is not laminated and does not have a plastic core. Therefore, panels can never delaminate.



No Sealants or Gaskets

The panel utilizes dry-joint rainscreen technology to eliminate sealants and gaskets in panel to panel connections



Environmentally Friendly

Panels are manufactured without a plastic core and are 100% recyclable.



Easy Installation

The panel's one piece design is optimized to install easily onto a variety of substrates.



25+ YEARS OF MANUFACTURING EXPERIENCE

Manufactured to Perfection

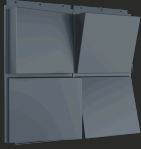
Origin Premier

Origin Premier is a versatile single skin metal panel offering unmatched design flexibility and a wide range of finishes to suit any architectural vision.



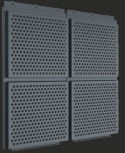
Premier Flat

Customize size, material, thickness and finish



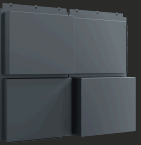
Premier Edge

Customize depth, size, material, thickness and finish



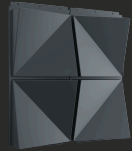
Premier Perforated

Customize imagery, perforation diameter, material, size, thickness, and finish



Premier Dimension

Customize depth, material, size, thickness and finish



Premier Butterfly

*Panel requirements can be complex
—Consult ZPS sales team for specific project request*

Premier vs. Select

One System. Multiple Solutions.

Robust detailing, field measurements and installation drawing sets

Ability to color match

Customize your panel size within our size parameters to meet your vision

PREMIER

Faster shop drawing and production lead times

Ability to custom color match

Wide variety of panel sizes to select from

SELECT

Value Engineered Solution

Origin Select

Origin Select retains the same quality and performance. The key to its affordability lies in the optimized process with select sizes, making this program an ideal choice for projects that demand both excellence and economic efficiency.

Origin Select

Standardized panel sizes, painted aluminum material, fixed at .080" thickness

Cut-to-fit application



Premier vs. Select

Features	Premier	Select
Panel Sizes	Customizable	Standardized
Colors	Unlimited	Standard <small>*Color match as requested</small>
Formed Corners	✓	✗
Architectural Detailing	✓	✗
Cut-to-Fit Detailing	✓	✓
Field Measurement	✓	✗
Installation Drawing Set	✓	✓ <small>*Available if required</small>

Origin Premier

Fully Tested System



AAMA 508
ASTM E330
ASTM E283

ASTM E1233
ASTM E331
AAMA 501.1
ASTM E84

Panel Parameters:

Material:

Post Painted Aluminum .080" (5052-H32)
Post Anodized Aluminum .080" (5005-AQ)
Stainless Steel 18GA (316)
Weathering Steel 18GA (A606)

Products: Flat, Dimension, Edge, Perforated

Max Depth: 6" Depth (Aluminum), 3" Depth (Steel)

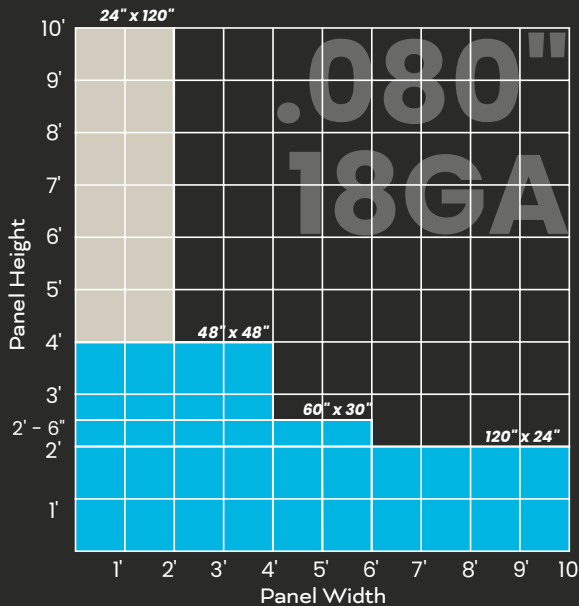


Material:

Post Painted Aluminum .125" (5052-H32)
Post Anodized Aluminum .125" (5005-AQ)
Stainless Steel 16GA (316)
Weathering Steel 16GA (A606)

Products: Flat, Dimension, Edge, Perforated

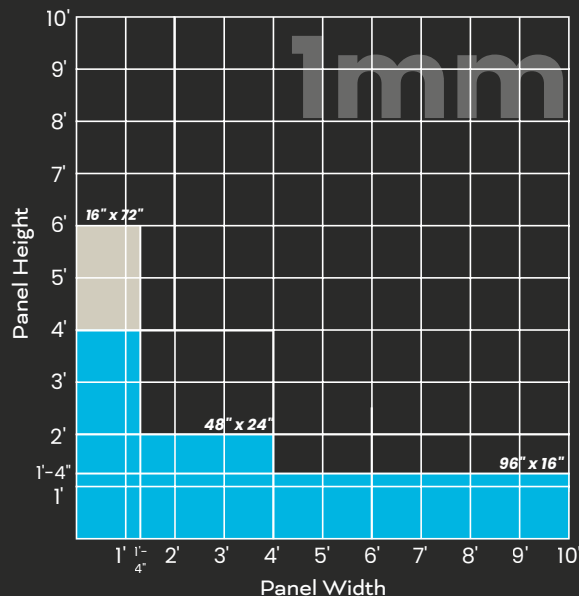
Max Depth: 8" Depth (Aluminum), 3" Depth (Steel)



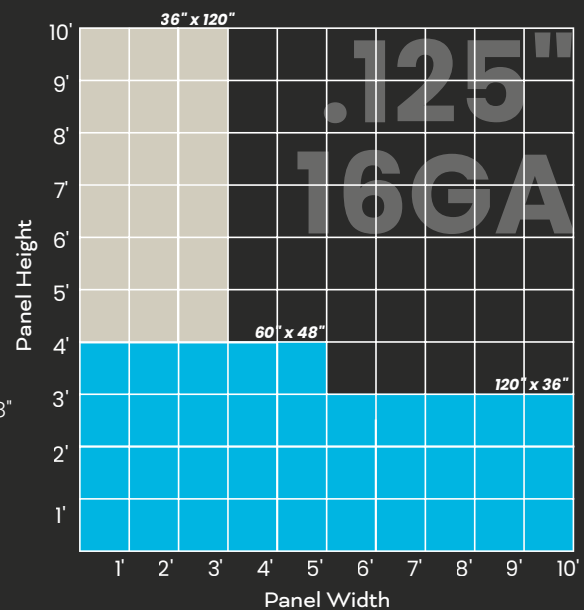
Material: NedZink 1mm

Products: Flat, Dimension, Edge, Perforated

Max Depth: 3" Depth



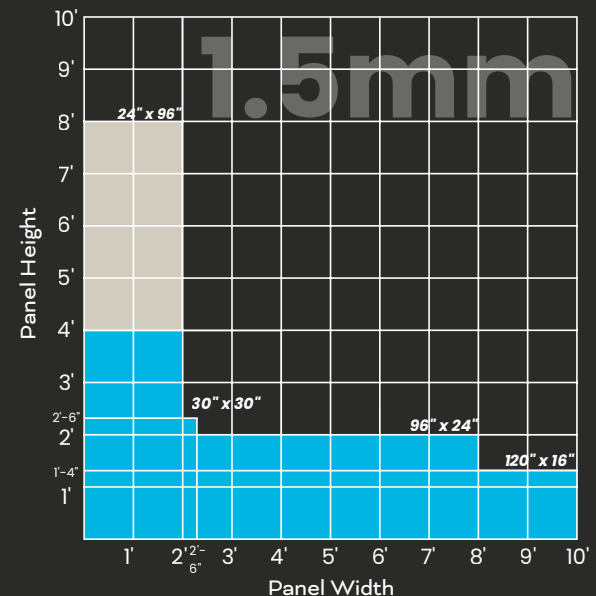
Wind clips not required (verification needed in high-wind areas). Panels can be fabricated to any size within colored zones.



Material: NedZink 1.5mm

Products: Flat, Dimension, Edge, Perforated

Max Depth: 3" Depth



Origin Select

Technical Data

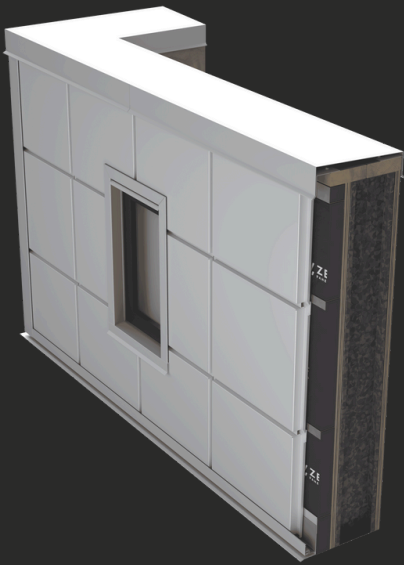
Material Thickness: .080" Aluminum

System Depth: 1-1/4" nominal

Material Weight: Less than 2 lbs. / sf

Panel Reveals: 5/8" nominal

Material Finish: 70% PVDF | 100% FEVE



Panel Parameters: Available Program Sizes

Fully Tested
System



AAMA 508
ASTM E330
ASTM E283

ASTM E1233
ASTM E331
AAMA 501.1
ASTM E84

Width x Height	Width x Height	Width x Height	Width x Height	Width x Height
18" x 48" Width x Height	22" x 48" Width x Height	24" x 96" Width x Height	60" x 24" Width x Height	96" x 22" Width x Height
18" x 72" Width x Height	22" x 60" Width x Height	24" x 120" Width x Height	72" x 16" Width x Height	96" x 24" Width x Height
18" x 96" Width x Height	22" x 72" Width x Height	30" x 30" Width x Height	72" x 18" Width x Height	120" x 16" Width x Height
18" x 120" Width x Height	22" x 96" Width x Height	36" x 36" Width x Height	72" x 20" Width x Height	120" x 20" Width x Height
20" x 60" Width x Height	22" x 120" Width x Height	48" x 22" Width x Height	72" x 22" Width x Height	120" x 22" Width x Height
20" x 72" Width x Height	24" x 48" Width x Height	48" x 24" Width x Height	72" x 24" Width x Height	120" x 24" Width x Height
20" x 96" Width x Height	24" x 60" Width x Height	60" x 20" Width x Height	96" x 16" Width x Height	
20" x 120" Width x Height	24" x 72" Width x Height	60" x 22" Width x Height	96" x 20" Width x Height	



VISIT OUR WEBSITE

www.zeeffpanels.com

616-341-7227
info@zeeffpanels.com

138 W Washington Ave.
Zeeland, MI
49424