

# Installation Guide

---





Zeeff Panel Systems is a leader in customized architectural design solutions for building envelopes.

With extensive experience in the metal panel industry, ZPS has witnessed its evolution firsthand. Today, driven by a renewed vision, we are committed to transforming the industry for the better.

- + Limitless design options
- + Fully tested system
- + Dedicated project team



# INSTALLATION GUIDE

Easy Installation



Non Combustible



No Silicone Sealants



Not Laminated



**Professional Installation Recommended:** Zeeff Panel Systems strongly recommends that all panels be installed by qualified professionals to ensure safety, performance, and compliance with building codes.

**Guidelines Are General Reference Only:** This guide provides general installation instructions and may not address project specific conditions. Always refer to project specifications and consult with the project engineer or architect.

*For precise installation requirements and to ensure compliance with project specific conditions, always refer to the approved shop drawings.*

Manufactured to Perfection

# Origin Premier

Origin Premier is a versatile single skin metal panel offering unmatched design flexibility and a wide range of finishes to suit any architectural vision.



**Premier Flat**  
Customize size, material, thickness and finish



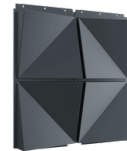
**Premier Edge**  
Customize depth, size, material, thickness and finish



**Premier Perforated**  
Customize imagery, perforation diameter, material, size, thickness, and finish



**Premier Dimension**  
Customize depth, material, size, thickness and finish



**Premier Butterfly**  
\*Panel requirements can be complex  
—Consult ZPS sales team for specific project request\*

## Premier vs. Select

One System. Multiple Solutions.

Robust detailing, field measurements and installation drawing sets

Ability to color match

Customize your panel size within our size parameters to meet your vision

PREMIER

Faster shop drawing and production lead times

Ability to custom color match

Wide variety of panel sizes to select from

SELECT

Value Engineered Solution

# Origin Select

Origin Select retains the same quality and performance. The key to its affordability lies in the optimized process with select sizes, making this program an ideal choice for projects that demand both excellence and economic efficiency.

**Origin Select**  
Standardized panel sizes, painted aluminum material, fixed at .080" thickness

Cut-to-fit application



Premier vs. Select		
Features	Premier	Select
Panel Sizes	Customizable	Standardized
Colors	Unlimited	Standard <small>*Color match as requested</small>
Formed Corners	✓	✗
Architectural Detailing	✓	✗
Cut-to-Fit Detailing	✓	✓
Field Measurement	✓	✗
Installation Drawing Set	✓	✓ <small>*Available if required</small>

# Premier Installation



## Step One: *Perimeter Trims*

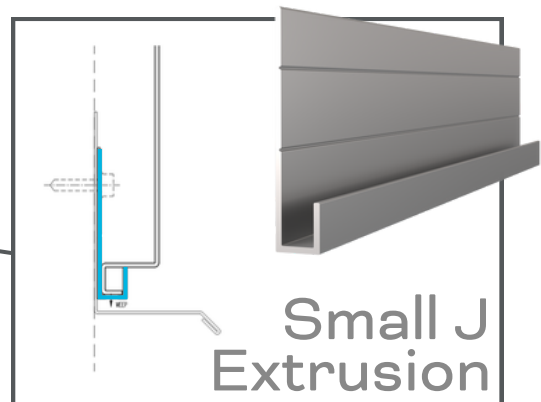
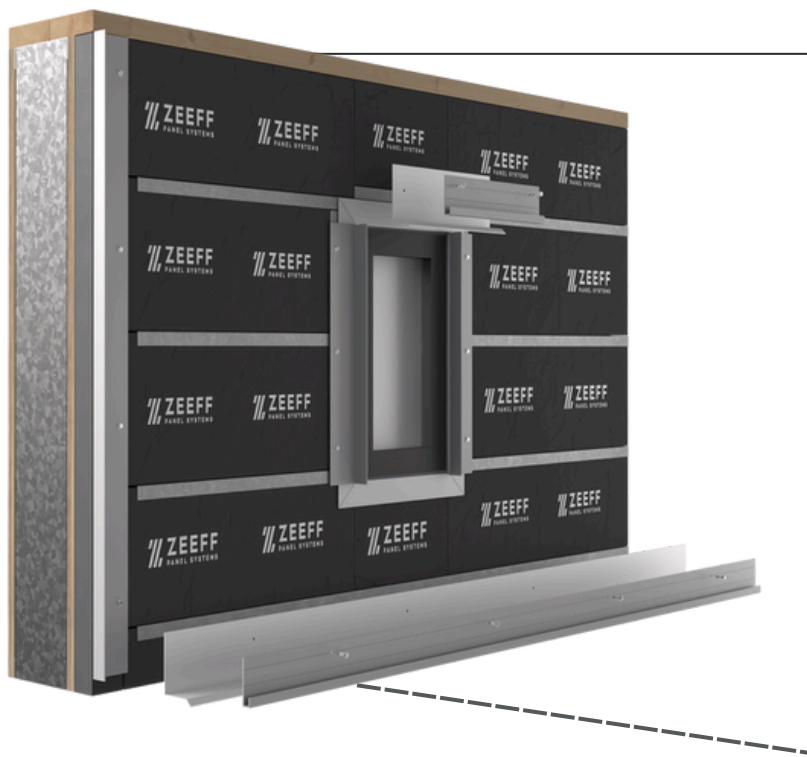
Begin by fastening the perimeter trim into substrate.



## Step Two: *Small J Starter Extrusion*

Install the small “J” starter extrusion where bottom panel engagement is needed.

Drill weep holes as needed and fasten it to the bottom of the work area.



*For precise installation requirements and to ensure compliance with project specific conditions, always refer to the approved shop drawings.*



## **Step Three:** *Install Panels*

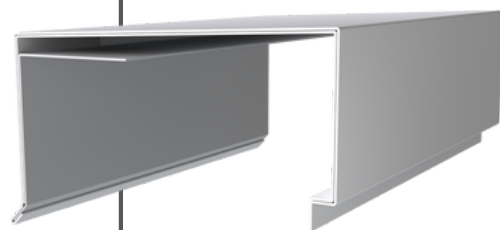
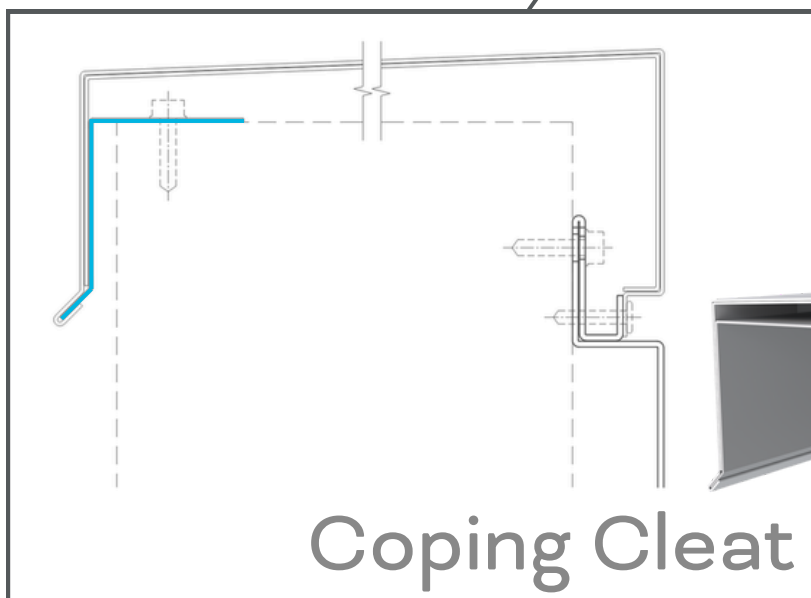
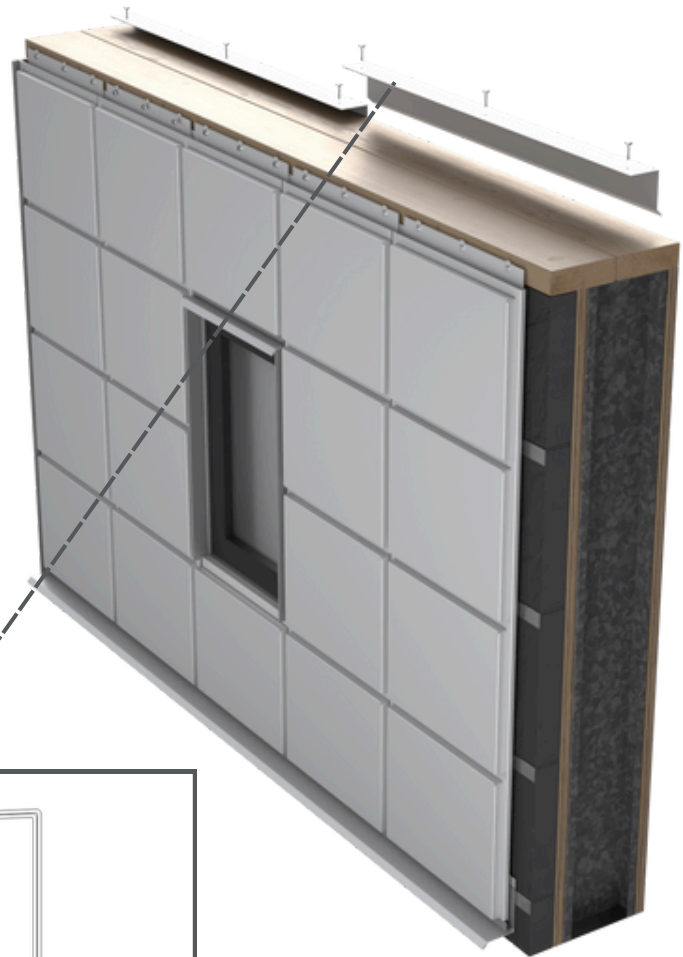
Secure the bottom hook and tip in position. Begin installing the panels from the bottom, working left to right.



## Step Four: *Coping Keepers*

---

Fasten the coping cleat  
before the installation of the  
coping cap and splice plate.



*For precise installation requirements and to ensure compliance with  
project specific conditions, always refer to the approved shop drawings.*

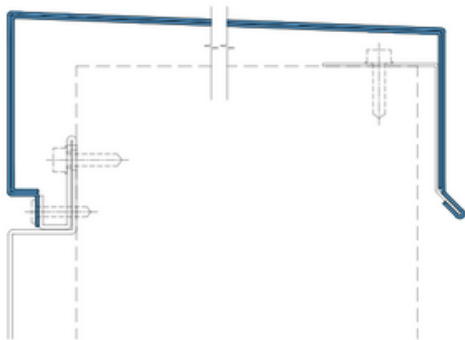
# Premier Installation

## Step Five:

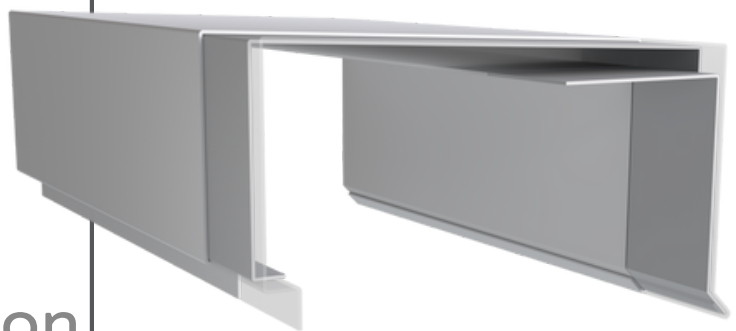
### *Coping Caps and Splice Plates*

During installation, insert the splice plate into the coping cap. For integrated coping, secure it directly into the face of the panel's J pocket.

*ZPS supplies 6in. splice plates when coping is added to a purchase order.*



Panel Termination  
at Coping





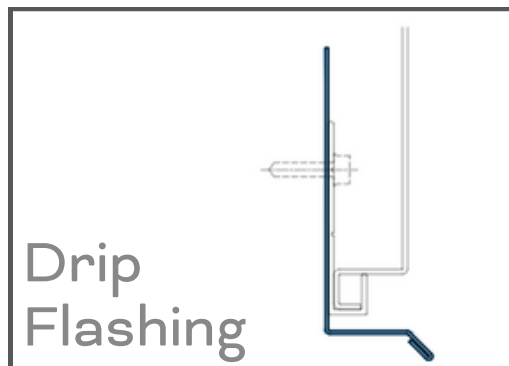
# Select Installation



## Step One:

### *Drip Flashings* (if applicable)

Depending on the project specifications, install the bottom drip flashings first, if necessary.



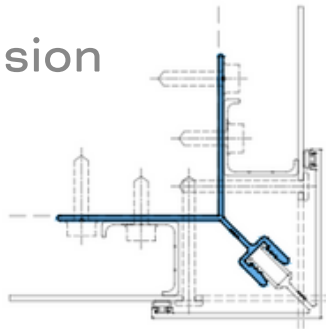
## Step Two: Extrusion Backpieces

Install the 2 piece J  
extrusion backpiece where  
needed.

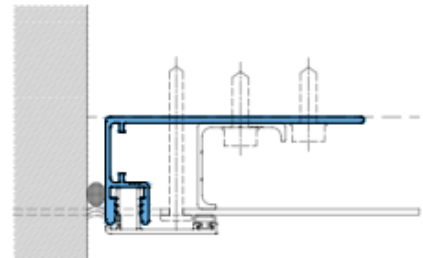
Drill weep holes as need at  
the bottom.



Corner Extrusion  
Backpiece



2 Piece J Extrusion  
Backpiece



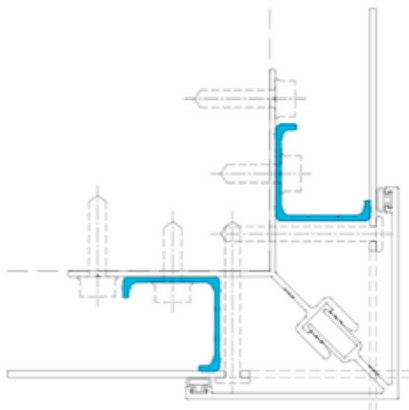
## Step Three:

### *Cut Start Extrusion*

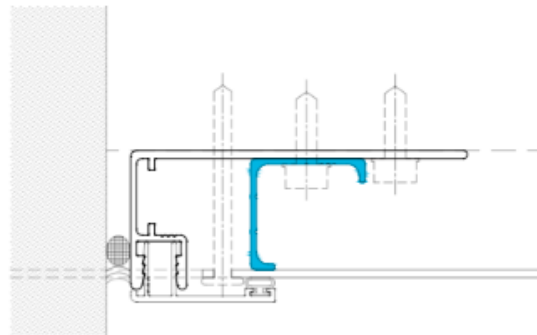
Install the cut start extrusion at any location where a panel will interface with an extrusion.



### Corner Extrusion



### 2 Piece J Extrusion



## Step Four: *Field Cut and Install Panels*

Field trim panels as needed to  
accommodate site conditions.

Begin installation at the bottom left  
corner of the assembly.





## Step Five: Field Drill Fastening Holes

Field drill fastening holes at top of panel if top fastening flange has been removed.

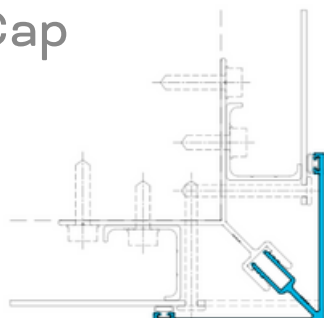


## Step Six: Extrusion Caps

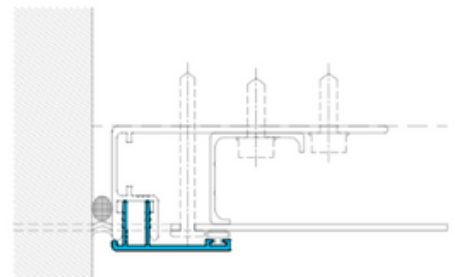
Seat extrusion caps into place with a rubber mallet.



### Corner Extrusion Cap



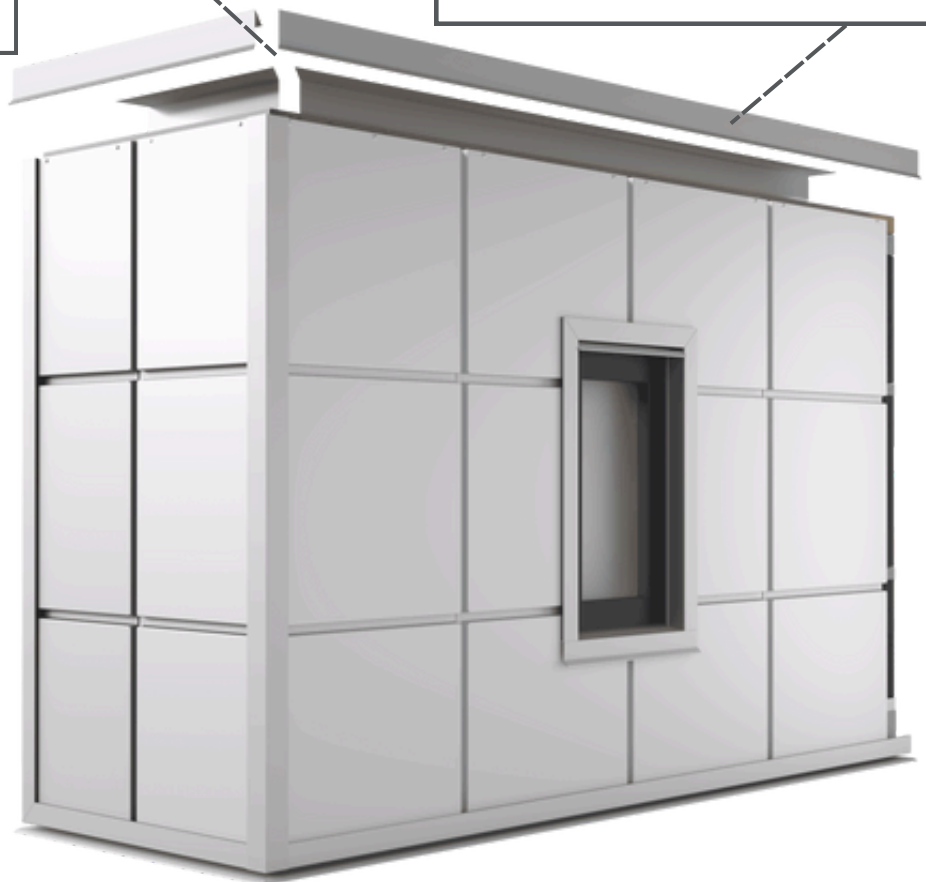
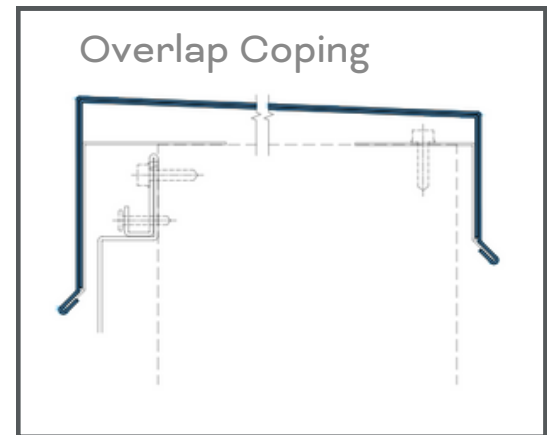
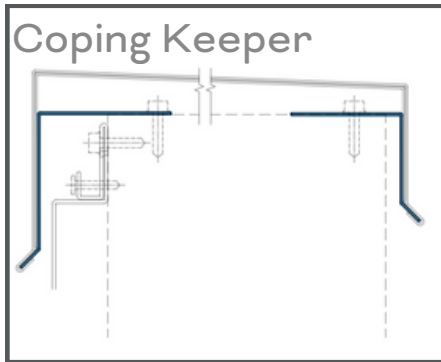
### 2 Piece J Extrusion Cap



# Select Installation

## Step Seven: Overlapping Coping (if applicable)

Install coping keepers, splice plates, and coping cap.





**No Liability for Improper Installation:**

Zeeff Panel Systems is not responsible for any damage, injury, or product failure resulting from improper installation, misuse, or deviation from these guidelines.

[www.zeeffpanels.com](http://www.zeeffpanels.com)