

Origin Series Product Data Sheet

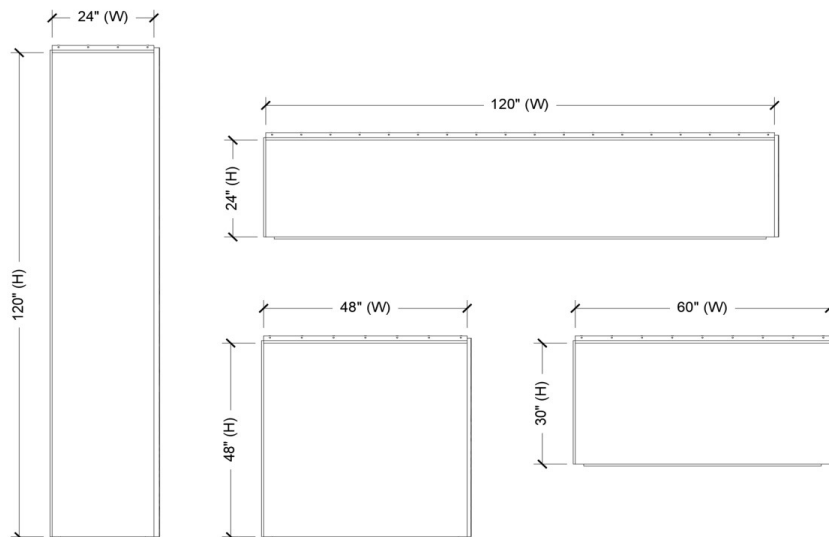
Post Anodized Aluminum (AL-08)



Pressure Equalized Rainscreen System | Designed in America | Made in America | Solid Metal

Maximum Panel Size Parameters

Panel sizes as shown are the recommended maximum width and heights. If there is a panel size that fits inside these guidelines, ZPS can easily manufacture it. Please contact a ZPS to discuss larger panel sizes.



Technical Information

Material Thickness:	.080" Aluminum
System Depth:	1-1/4" nominal standard, up to 6"
Material Weight:	Less than 2 lbs. / sf
Panel Joints:	5/8" nominal (1/8" - 1" available)
Material Finish:	AAMA 611 Architectural Class 1
Warranty:	5 - 10 years for anodized 2 years for MFG.



Anodizing Color Variation: Anodizing aluminum is a natural coating, therefore you can and should expect variation from panel to panel. If finish variation is not accepted, please contact ZPS for paint finish options.

Fully Tested System: AAMA 508 | ASTM E330 | ASTM E283 | ASTM E1233 | ASTM E331 | AAMA 501.1



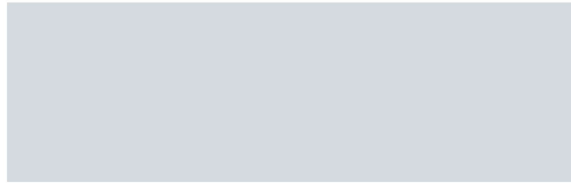
PO Box 1589 Holland, MI 49423

info@zeeffpanels.com | www.zeeffpanels.com

Anodized Standard Color Chart



Natural Coating | UV Resistant | Low Maintenance | AAMA-611 Specification | Class 1



Clear ANO-215 AE



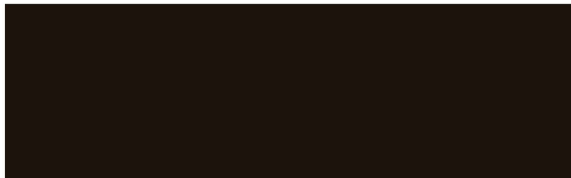
Champagne ANO-300 AE



Light Bronze ANO-301 AE



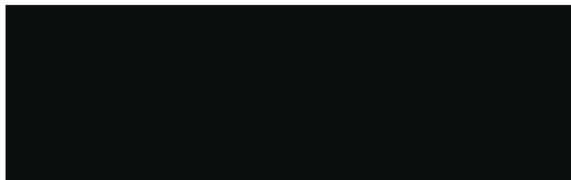
Medium Bronze ANO-302 AE



Dark Bronze ANO-303 AE



Extra-Dark Bronze ANO-304 AE



Black ANO-305 AE

Zeeff Panel Systems is Proudly Partnered with Linetec for Anodized Finishing
info@zeeffpanels.com | www.zeeffpanels.com | www.linetec.com/anodize/

